

CMTM1 polyclonal antibody

Catalog: BS61155

Host: Rabbit

Reactivity: Human, Mouse, Rat

BackGround:

Chemokines are members of a superfamily of small inducible, secreted, pro-inflammatory cytokines. Members of the chemokine-like factor superfamily (CKLFSF) share similarities with both chemokine and transmembrane 4 superfamilies of signaling molecules. As a member of the CKLFSF family of proteins, CMTM1 (CKLF-like MARVEL transmembrane domain-containing protein 1), also known as CKLFSF1 (Chemokine-like factor superfamily member 1), is a 169 amino acid multi-pass membrane protein that is highly expressed in testis, therefore probably playing a role in spermatogenesis or testicular development. CMTM1 contains a CC-chemokine motif and four transmembrane segments. The gene encoding CMTM1 resides in a tight gene cluster on human chromosome 16 with CKLF, CMTM2, CMTM3 and CMTM4. There are at least sixteen isoforms of CMTM1 that are produced as a result of alternative splicing events.

Product:

1 mg/ml in Phosphate buffered saline (PBS) with 0.05% sodium azide, approx. pH 7.3.

Molecular Weight:

~ 18 kDa

Swiss-Prot:

Q8IZ96

Purification&Purity:

The antibody was affinity-purified from rabbit antiserum by affinity-chromatography using epitope-specific im-

munogen and the purity is > 95% (by SDS-PAGE).

Applications:

WB: 1:500~1:1000

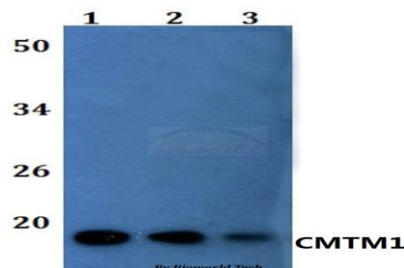
Storage&Stability:

Store at 4 °C short term. Aliquot and store at -20 °C long term. Avoid freeze-thaw cycles.

Specificity:

CMTM1 polyclonal antibody detects endogenous levels of CMTM1 protein.

DATA:



Western blot (WB) analysis of CMTM1 polyclonal antibody at 1:500 dilution

Lane1:HEK293T whole cell lysate

Lane2:Raw264.7 whole cell lysate

Lane3:H9C2 whole cell lysate

Note:

For research use only, not for use in diagnostic procedure.

Bioworld Technology, Inc.

Add: 1660 South Highway 100, Suite 500 St. Louis Park, MN 55416, USA.

Email: info@bioworld.com

Tel: 6123263284

Fax: 6122933841

Bioworld technology, co. Ltd.

Add: No 9, weidi road Qixia District Nanjing, 210046, P. R. China.

Email: info@biogot.com

Tel: 0086-025-68037686

Fax: 0086-025-68035151