

## CHST6 polyclonal antibody

Catalog: BS61148

Host: Rabbit

Reactivity: Human, Mouse, Rat

### BackGround:

Sulfotransferase enzymes catalyze the sulfate conjugation of many hormones, neurotransmitters, drugs and xenobiotic compounds. These enzymes differ in their tissue distributions and substrate specificities, although the gene structure (number and length of exons) is similar among family members. Carbohydrate sulfotransferase 5 (CHST5) (also referred to as GlcNAc6ST-3 or IGn6ST) and carbohydrate sulfotransferase 6 (CHST6) (also referred to as GlcNAc6ST-5 or Cgn6ST) are predominantly expressed in the intestine and cornea, respectively. They are highly homologous and both are orthologs of the murine CHST5. CHST5 and CHST6 may be the result of gene duplication. They catalyze the transfer of sulfate to position 6 of non-reducing N-acetylglucosamine (GlcNAc) residues. CHST5 preferably mediates the sulfation of short carbohydrates and O-linked sugars of mucin-type acceptors. CHST6 mediates the sulfation of keratan in the cornea, which is important in maintaining corneal transparency.

### Product:

1 mg/ml in Phosphate buffered saline (PBS) with 0.05% sodium azide, approx. pH 7.3.

### Molecular Weight:

~ 44 kDa

### Swiss-Prot:

Q9GZX3

### Purification&Purity:

The antibody was affinity-purified from rabbit antiserum

by affinity-chromatography using epitope-specific immunogen and the purity is > 95% (by SDS-PAGE).

### Applications:

WB: 1:500~1:1000

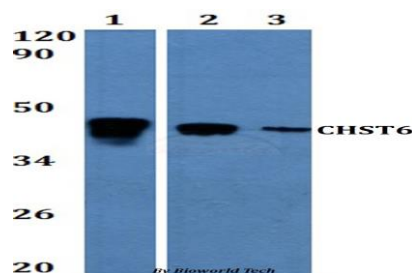
### Storage&Stability:

Store at 4 °C short term. Aliquot and store at -20 °C long term. Avoid freeze-thaw cycles.

### Specificity:

CHST6 polyclonal antibody detects endogenous levels of CHST6 protein.

### DATA:



Western blot (WB) analysis of CHST6 polyclonal antibody at 1:500

Lane1:Mcf-7 whole cell lysate

Lane2:H9C2 whole cell lysate

Lane3:sp20 whole cell lysate

### Note:

For research use only, not for use in diagnostic procedure.

### Bioworld Technology, Inc.

Add: 1660 South Highway 100, Suite 500 St. Louis Park, MN 55416, USA.

Email: [info@bioworld.com](mailto:info@bioworld.com)

Tel: 6123263284

Fax: 6122933841

### Bioworld technology, co. Ltd.

Add: No 9, weidi road Qixia District Nanjing, 210046, P. R. China.

Email: [info@biogol.com](mailto:info@biogol.com)

Tel: 0086-025-68037686

Fax: 0086-025-68035151