

BATF polyclonal antibody

Catalog: BS61050

Host: Rabbit

Reactivity: Human, Rat

BackGround:

B-ATF is a nuclear basic leucine zipper protein that belongs to the AP-1/ATF superfamily of transcription factors. The leucine zipper of B-ATF mediates dimerization with members of the Jun family of proteins. The B-ATF protein does not homodimerize efficiently, but rather forms a heterodimer preferentially with c-Jun. The B-ATF/c-Jun protein complex can interact with DNA containing a consensus binding site for AP-1, suggesting that B-ATF functions as a tissue-specific modulator of the AP-1 transcription complex in human cells B-ATF also associates with IFP35, a leucine zipper protein that translocates to the nucleus following IFN treatment. The gene encoding B-ATF, also designated SFA-2, is strongly expressed in mature T and B lymphocytes, and is up-regulated after transformation by human T-cell leukemia virus type I.

Product:

1 mg/ml in Phosphate buffered saline (PBS) with 0.05% sodium azide, approx. pH 7.3.

Molecular Weight:

~ 14 kDa

Swiss-Prot:

Q16520

Purification&Purity:

The antibody was affinity-purified from rabbit antiserum

by affinity-chromatography using epitope-specific immunogen and the purity is > 95% (by SDS-PAGE).

Applications:

WB: 1:500~1:1000

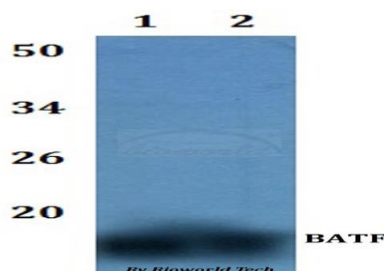
Storage&Stability:

Store at 4 °C short term. Aliquot and store at -20 °C long term. Avoid freeze-thaw cycles.

Specificity:

BATF polyclonal antibody detects endogenous levels of BATF protein.

DATA:



Western blot (WB) analysis of BATF polyclonal antibody at 1:500 dilution. Lane1:H9C2 whole cell lysate. Lane2:HELA whole cell lysate.

Note:

For research use only, not for use in diagnostic procedure.

Bioworld Technology, Inc.

Add: 1660 South Highway 100, Suite 500 St. Louis Park, MN 55416, USA.

Email: info@bioworld.com

Tel: 6123263284

Fax: 6122933841

Bioworld technology, co. Ltd.

Add: No 9, weidi road Qixia District Nanjing, 210046, P. R. China.

Email: info@biogol.com

Tel: 0086-025-68037686

Fax: 0086-025-68035151