

TAF1 polyclonal antibody

Catalog: BS61019

Host: Rabbit

Reactivity: Human, Mouse, Rat

BackGround:

TAF1L (transcription initiation factor TFIID 210 kDa subunit) is a 1,826 amino acid protein that serves as a functional substitute for TAF II p250 in spermatogenic cells. In somatic cells, TAF II p250, which is located on the X chromosome, is a general transcription factor which initiates preinitiation complex assembly through direct interaction with the TATA promoter element. However, during male meiosis, sex chromosomes are transcriptionally silenced, inactivating the transcriptional activity of TAF II p250. With an autosomal location, TAF1L functionally replaces TAF II p250 in testes. It is documented that the gene encoding human TAF1L arose by retroposition of TAF II p250 mRNA during primate evolution after species divergence.

Product:

1 mg/ml in Phosphate buffered saline (PBS) with 0.05% sodium azide, approx. pH 7.3.

Molecular Weight:

~ 310 kDa

Swiss-Prot:

P21675

Purification&Purity:

The antibody was affinity-purified from rabbit antiserum by affinity-chromatography using epitope-specific immunogen and the purity is > 95% (by SDS-PAGE).

Applications:

WB: 1:500~1:1000

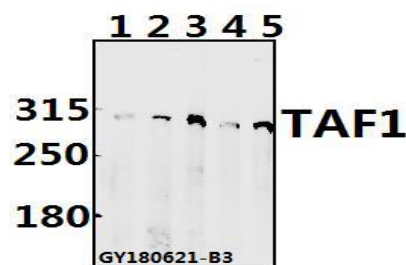
Storage&Stability:

Store at 4 °C short term. Aliquot and store at -20 °C long term. Avoid freeze-thaw cycles.

Specificity:

TAF1 pAb detects endogenous levels of TAF1 protein.

DATA:



Western blot (WB) analysis of TAF1 pAb at 1:500 dilution

Lane1:HepG2 whole cell lysate(40ug)

Lane2:L02 whole cell lysate(40ug)

Lane3:H1792 whole cell lysate(40ug)

Lane4:AML-12 whole cell lysate(40ug)

Lane5:C6 whole cell lysate(40ug)

Note:

For research use only, not for use in diagnostic procedure.

Bioworld Technology, Inc.

Add: 1660 South Highway 100, Suite 500 St. Louis Park, MN 55416, USA.

Email: info@bioworld.com

Tel: 6123263284

Fax: 6122933841

Bioworld technology, co. Ltd.

Add: No 9, weidi road Qixia District Nanjing, 210046, P. R. China.

Email: info@biogot.com

Tel: 0086-025-68037686

Fax: 0086-025-68035151