

LYL1 polyclonal antibody

Catalog: BS61016

Host: Rabbit

Reactivity: Human, Mouse, Rat

BackGround:

Lyl-1, TAL1 and TAL2 are part of a family of basic helix-loop-helix (bHLH) proteins implicated in T cell acute leukemia. TAL1, also designated SCL, is a serine phosphoprotein and basic helix-loop-helix transcription factor known to regulate embryonic hematopoiesis. TAL2 is a protein involved in T cell acute lymphoblastic leukemia through a chromosomal translocation involving TAL2 and T cell receptor β chain genes. TAL2 includes a helix-loop-helix protein dimerization and DNA-binding domain that is homologous to TAL1 and Lyl-1 proto-oncogenes. Lyl-1 (lymphoblastic leukemia-derived sequence 1) is a nuclear protein. Endogenous Lyl-1 exists in complex with E2 α proteins. Lyl-1 and E2 α protein can form heterodimeric complexes with distinctive DNA-binding properties in hematolymphoid cells. Lyl-1 is involved in a chromosomal aberration which causes a form of T cell acute lymphoblastic leukemia (T-ALL).

Product:

1 mg/ml in Phosphate buffered saline (PBS) with 0.05% sodium azide, approx. pH 7.3.

Molecular Weight:

~ 30 kDa

Swiss-Prot:

P12980

Purification&Purity:

The antibody was affinity-purified from rabbit antiserum by affinity-chromatography using epitope-specific im-

munogen and the purity is > 95% (by SDS-PAGE).

Applications:

WB: 1:500~1:1000

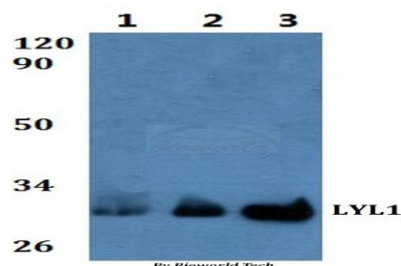
Storage&Stability:

Store at 4 °C short term. Aliquot and store at -20 °C long term. Avoid freeze-thaw cycles.

Specificity:

LYL1 polyclonal antibody detects endogenous levels LYL1 protein.

DATA:



Western blot (WB) analysis of LYL1 polyclonal antibody at 1:500

Line1:HEK293T whole cell lysate

Line2:H9C2 whole cell lysate

Line3:Raw264.7 whole cell lysate

Note:

For research use only, not for use in diagnostic procedure.

Bioworld Technology, Inc.

Add: 1660 South Highway 100, Suite 500 St. Louis Park, MN 55416, USA.

Email: info@bioworld.com

Tel: 6123263284

Fax: 6122933841

Bioworld technology, co. Ltd.

Add: No 9, weidi road Qixia District Nanjing, 210046, P. R. China.

Email: info@biogol.com

Tel: 0086-025-68037686

Fax: 0086-025-68035151