

ZIC1 polyclonal antibody

Catalog: BS61011

Host: Rabbit

Reactivity: Human, Mouse, Rat

BackGround:

Zic1 (zinc finger protein of the cerebellum 1) is a C2H2 zinc finger transcription factor that controls the expansion of neuronal precursors by inhibiting the progression of neuronal differentiation. Zic1 determines the cerebellar folial pattern by influencing proliferation in the external germinal layer (EGL). Zic1 can bind and transactivate the apolipoprotein E gene. This gene is closely linked to the gene encoding zinc finger protein of the cerebellum 4, a related family member on chromosome 3.

Product:

1 mg/ml in Phosphate buffered saline (PBS) with 0.05% sodium azide, approx. pH 7.3.

Molecular Weight:

~ 51 kDa

Swiss-Prot:

Q15915

Purification&Purity:

The antibody was affinity-purified from rabbit antiserum by affinity-chromatography using epitope-specific immunogen and the purity is > 95% (by SDS-PAGE).

Applications:

WB: 1:500~1:1000

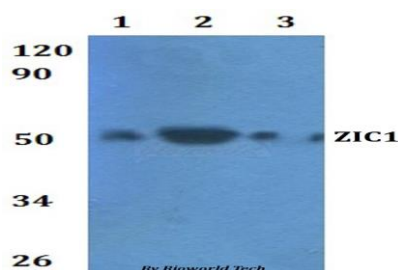
Storage&Stability:

Store at 4 °C short term. Aliquot and store at -20 °C long term. Avoid freeze-thaw cycles.

Specificity:

ZIC1 polyclonal antibody detects endogenous levels of ZIC1 protein.

DATA:



Western blot (WB) analysis of ZIC1 polyclonal antibody at 1:500 dilution Lane1:HEK293T whole cell lysate

Lane2:RAW264.7 whole cell lysate Lane3:H9C2 whole cell lysate

Note:

For research use only, not for use in diagnostic procedure.

Bioworld Technology, Inc.

Add: 1660 South Highway 100, Suite 500 St. Louis Park, MN 55416, USA.

Email: info@bioworld.com

Tel: 6123263284

Fax: 6122933841

Bioworld technology, co. Ltd.

Add: No 9, weidi road Qixia District Nanjing, 210046, P. R. China.

Email: info@biogot.com

Tel: 0086-025-68037686

Fax: 0086-025-68035151