

## CSF2RA polyclonal antibody

Catalog: BS60920

Host: Rabbit

Reactivity: Human, Mouse, Rat

### BackGround:

The human IL-3, IL-5 and GM-CSF receptors are each composed of both unique  $\alpha$  subunits and a common  $\beta$  subunit. The  $\alpha$  subunits are low affinity ligand binding proteins while the  $\beta$  subunits do not themselves bind ligand, but are required for high affinity binding by the  $\alpha$  subunits. In contrast, the mouse IL-3 receptor has two distinct  $\beta$  subunits, one that functions only in IL-3 mediated cell signaling and a second that is shared with IL-5 and GM-CSF. The murine  $\beta$ -subunits are 91% homologous at the amino acid level but only 56% homologous to the human  $\beta$  subunit. Although neither the murine nor the human  $\beta$  subunit contains tyrosine kinase domains, both activate tyrosine phosphorylation mediated signaling pathways.

### Product:

1 mg/ml in Phosphate buffered saline (PBS) with 0.05% sodium azide, approx. pH 7.3.

### Molecular Weight:

~ 46 kDa

### Swiss-Prot:

P15509

### Purification&Purity:

The antibody was affinity-purified from rabbit antiserum by affinity-chromatography using epitope-specific im-

muno- and the purity is > 95% (by SDS-PAGE).

### Applications:

WB: 1:500~1:1000

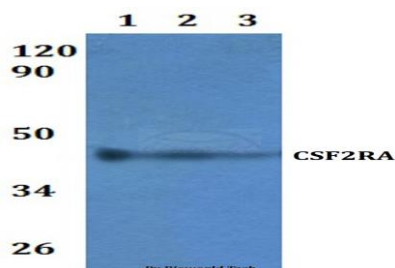
### Storage&Stability:

Store at 4 °C short term. Aliquot and store at -20 °C long term. Avoid freeze-thaw cycles.

### Specificity:

CSF2RA polyclonal antibody detects endogenous levels of CSF2RA protein.

### DATA:



Western blot (WB) analysis of CSF2RA polyclonal antibody at 1:500 dilution Lane1:HEK293T whole cell lysate

Lane2:RAW264.7 whole cell lysate Lane3:H9C2 whole cell lysate

### Note:

For research use only, not for use in diagnostic procedure.

### Bioworld Technology, Inc.

Add: 1660 South Highway 100, Suite 500 St. Louis Park, MN 55416, USA.

Email: [info@bioworld.com](mailto:info@bioworld.com)

Tel: 6123263284

Fax: 6122933841

### Bioworld technology, co. Ltd.

Add: No 9, weidi road Qixia District Nanjing, 210046, P. R. China.

Email: [info@biogot.com](mailto:info@biogot.com)

Tel: 0086-025-68037686

Fax: 0086-025-68035151