

## PRL polyclonal antibody

Catalog: BS60888

Host: Rabbit

Reactivity: Human, Mouse, Rat

### BackGround:

Protein tyrosine phosphatases (PTPs) play a role in regulating diverse cellular processes. They form a small class of prenylated protein phosphatases called PRL proteins characterized by a C-terminal consensus sequence for prenylation. PRL-1, also designated Protein tyrosine phosphatase type IVA protein 1 (PTP4A1), is a unique nuclear PTP that is induced in regenerating liver and mitogen-stimulated cells. It is primarily expressed in spleen, bone marrow, thymus, lymph nodes, T lymphocytes and tonsil and is overexpressed in tumor cell lines. PRL-2 (Protein tyrosine phosphatase type IVA protein 2, or PTP4A2) is ubiquitously expressed with highest levels in heart, skeletal muscle and thymus but is also overexpressed in prostate tumor tissue. PRL-2 stimulates progression from G1 into S phase during mitosis and promotes tumors. PRL-3, also known as Protein Tyrosine Phosphatase Type IVA, member 3 (PTP4A3) is expressed in heart and skeletal muscle as well as epithelial cells of the small intestine and associates with the cell plasma membrane. Over expression of PRL-3 inhibits angiotensin-II induced cell calcium mobilization and promotes cell growth. PRL-3 is important for colorectal cancer metastasis and may serve as a new therapeutic target for this condition.

### Product:

1 mg/ml in Phosphate buffered saline (PBS) with 0.05% sodium azide, approx. pH 7.3.

### Molecular Weight:

~ 26 kDa

### Swiss-Prot:

P01236

### Purification&Purity:

The antibody was affinity-purified from rabbit antiserum by affinity-chromatography using epitope-specific immunogen and the purity is > 95% (by SDS-PAGE).

### Applications:

WB: 1:500~1:1000

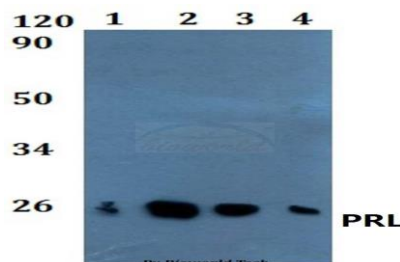
### Storage&Stability:

Store at 4 °C short term. Aliquot and store at -20 °C long term. Avoid freeze-thaw cycles.

### Specificity:

PRL polyclonal antibody detects endogenous levels of PRL protein.

### DATA:



Western blot (WB) analysis of PRL polyclonal antibody at 1:500 dilution

Lane1:A549 whole cell lysate

Lane2:MCF-7 whole cell lysate

Lane3:H9C2 whole cell lysate

Lane4:SP20 whole cell lysate

### Note:

For research use only, not for use in diagnostic procedure.

### Bioworld Technology, Inc.

Add: 1660 South Highway 100, Suite 500 St. Louis Park, MN 55416, USA.

Email: [info@bioworld.com](mailto:info@bioworld.com)

Tel: 6123263284

Fax: 6122933841

### Bioworld technology, co. Ltd.

Add: No 9, weidi road Qixia District Nanjing, 210046, P. R. China.

Email: [info@biogot.com](mailto:info@biogot.com)

Tel: 0086-025-68037686

Fax: 0086-025-68035151