

## CD68 polyclonal antibody

Catalog: BS60864

Host: Rabbit

Reactivity: Human, Mouse, Rat

### BackGround:

CD68, which is homologous to the mouse antigen macro-sialin, belongs to a family of acidic, highly glycosylated lysosomal glycoproteins (LGPs) that includes lamp-1 and lamp-2. CD68 is found in cytoplasmic granules and in the cytoplasm of various non-hematopoietic tissues including liver and kidney tubules and glomeruli. CD68 is also found, to a lesser extent, on the surface of macrophages, monocytes, neutrophils, basophils and large lymphocytes. LGPs are major components of lysosomal membranes and may act to protect the membranes from attack by hydrolases.

### Product:

1 mg/ml in Phosphate buffered saline (PBS) with 0.05% sodium azide, approx. pH 7.3.

### Molecular Weight:

~ 37 kDa

### Swiss-Prot:

P34810

### Purification&Purity:

The antibody was affinity-purified from rabbit antiserum by affinity-chromatography using epitope-specific immunogen and the purity is > 95% (by SDS-PAGE).

### Applications:

WB: 1:500~1:1000

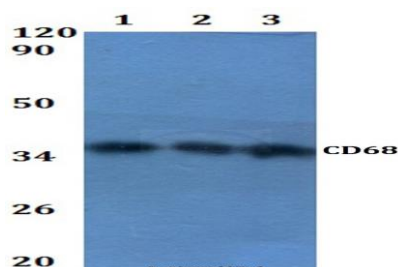
### Storage&Stability:

Store at 4 °C short term. Aliquot and store at -20 °C long term. Avoid freeze-thaw cycles.

### Specificity:

CD68 polyclonal antibody detects endogenous levels of CD68 protein.

### DATA:



Western blot (WB) analysis of CD68 polyclonal antibody at 1:500 dilution

Line1:A549 whole cell lysate

Line2:PC12 whole cell lysate

Line3:sp20 whole cell lysate

### Note:

For research use only, not for use in diagnostic procedure.

### Bioworld Technology, Inc.

Add: 1660 South Highway 100, Suite 500 St. Louis Park, MN 55416, USA.

Email: [info@bioworld.com](mailto:info@bioworld.com)

Tel: 6123263284

Fax: 6122933841

### Bioworld technology, co. Ltd.

Add: No 9, weidi road Qixia District Nanjing, 210046, P. R. China.

Email: [info@biogot.com](mailto:info@biogot.com)

Tel: 0086-025-68037686

Fax: 0086-025-68035151