

## RASSF3 polyclonal antibody

Catalog: BS60826

Host: Rabbit

Reactivity: Human, Mouse, Rat

### BackGround:

Ras is a small GTP-binding protein involved in many cellular processes, including proliferation, differentiation and apoptosis. Ras transmits signals of cell surface receptors by binding to a variety of effector molecules. In addition to the well characterized effectors Raf and PI 3-kinase, Ras also interacts with members of the RASSF family, including RASSF1, RASSF2, RASSF3, RASSF4 and Nore1. Members of the RASSF family contain a highly conserved Ras association domain (Ral GDS/AF-6 or RA) and function as Ras effectors/tumor suppressors. RASSF3 (Ras association domain family 3) is a ubiquitously expressed protein found in normal and cancerous tissues. RASSF3 contains an N-terminal RA domain and a coiled-coil SARAH domain. Three isoforms, namely RASSF3A, RASSF3B and RASSF3C, may exist for RASSF3 due to alternative splicing. RASSF3B and RASSF3C are shorter than RASSF3A and do not contain the RA and SARAH domain.

### Product:

1 mg/ml in Phosphate buffered saline (PBS) with 15 mM sodium azide, approx. pH 7.2.

### Molecular Weight:

~ 28 kDa

### Swiss-Prot:

Q86WH2

### Purification&Purity:

The antibody was affinity-purified from rabbit antiserum by affinity-chromatography using epitope-specific im-

munogen and the purity is &gt; 95% (by SDS-PAGE).

### Applications:

WB: 1:500~1:1000

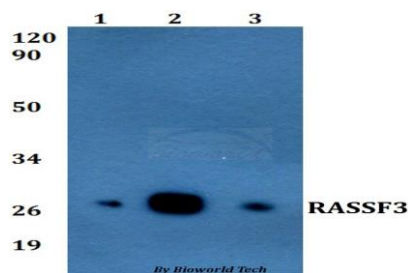
### Storage&Stability:

Store at 4 °C short term. Aliquot and store at -20 °C long term. Avoid freeze-thaw cycles.

### Specificity:

RASSF3 polyclonal antibody detects endogenous levels of RASSF3 protein.

### DATA:



Western blot (WB) analysis of RASSF3 polyclonal antibody at 1:500 dilution

Lane1:Mcf-7 whole cell lysate

Lane2:Raw264.7 whole cell lysate

Lane3:PC12 whole cell lysate

### Note:

For research use only, not for use in diagnostic procedure.

### Bioworld Technology, Inc.

Add: 1660 South Highway 100, Suite 500 St. Louis Park, MN 55416, USA.

Email: [info@bioworld.com](mailto:info@bioworld.com)

Tel: 6123263284

Fax: 6122933841

### Bioworld technology, co. Ltd.

Add: No 9, weidi road Qixia District Nanjing, 210046, P. R. China.

Email: [info@biogot.com](mailto:info@biogot.com)

Tel: 0086-025-68037686

Fax: 0086-025-68035151