

## MAG polyclonal antibody

Catalog: BS60807

Host: Rabbit

Reactivity: Human, Mouse, Rat

### BackGround:

Myelin-associated glycoprotein (MAG) is a nervous system cell-surface adhesion protein that is involved in linking myelinating glial cells to neuronal axons. MAG contains a sialic acid binding site and five IgG-like domains, thus identifying MAG as a member of a subgroup of the immunoglobulin superfamily. Like myelin, MAG inhibits axonal outgrowth and contributes to the inhibitory properties of myelin. Growth inhibition by MAG has been shown to be blocked when cerebellar neurons are pre-incubated with the neurotrophins BDNF or GDNF. It is suggested that this neurotrophin priming elevates cAMP and activates PKA.

### Product:

1 mg/ml in Phosphate buffered saline (PBS) with 15 mM sodium azide, approx. pH 7.2.

### Molecular Weight:

~ 100 kDa

### Swiss-Prot:

P20916

### Purification&Purity:

The antibody was affinity-purified from rabbit antiserum by affinity-chromatography using epitope-specific immunogen and the purity is > 95% (by SDS-PAGE).

### Applications:

WB: 1:500~1:1000

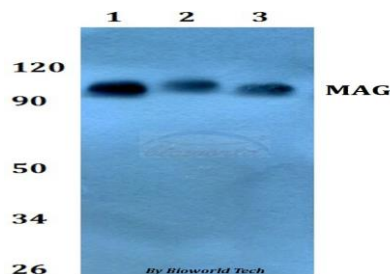
### Storage&Stability:

Store at 4 °C short term. Aliquot and store at -20 °C long term. Avoid freeze-thaw cycles.

### Specificity:

MAG polyclonal antibody detects endogenous levels of MAG protein.

### DATA:



Western blot (WB) analysis of MAG polyclonal antibody at 1:500 dilution

Lane1: HEK293T whole cell lysate

Lane2: Raw264.7 whole cell lysate

Lane3: H9C2 whole cell lysate

### Note:

For research use only, not for use in diagnostic procedure.

### Bioworld Technology, Inc.

Add: 1660 South Highway 100, Suite 500 St. Louis Park, MN 55416, USA.

Email: [info@bioworld.com](mailto:info@bioworld.com)

Tel: 6123263284

Fax: 6122933841

### Bioworld technology, co. Ltd.

Add: No 9, weidi road Qixia District Nanjing, 210046, P. R. China.

Email: [info@biogot.com](mailto:info@biogot.com)

Tel: 0086-025-68037686

Fax: 0086-025-68035151