

LTBP1 polyclonal antibody

Catalog: BS60783

Host: Rabbit

Reactivity: Human, Mouse, Rat

BackGround:

Latent transforming growth factor-beta 1 binding protein 1 (LTBP-1), a heavy glycoprotein, is part of the platelet-derived TGF-beta 1 complex. LTBP-1 serves as an anchor for latent TGF-beta in the extracellular matrix and is a component of microfibrillar structures. Cleavage of LTBP results in LTBP-1, which may sequester latent TGF-beta in the extracellular matrix and regulate its activation. LTBP-1 mRNA is enriched in ovarian carcinoma tissues and highly expressed in serous and mucinous adenocarcinomas.

Product:

1 mg/ml in Phosphate buffered saline (PBS) with 15 mM sodium azide, approx. pH 7.2.

Molecular Weight:

~ 187 kDa

Swiss-Prot:

Q14766

Purification&Purity:

The antibody was affinity-purified from rabbit antiserum by affinity-chromatography using epitope-specific immunogen and the purity is > 95% (by SDS-PAGE).

Applications:

WB: 1:500~1:1000

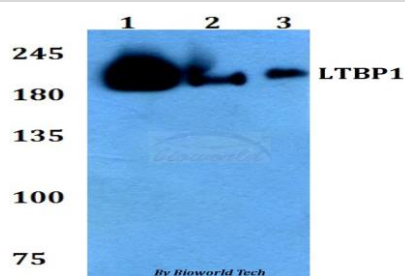
Storage&Stability:

Store at 4 °C short term. Aliquot and store at -20 °C long term. Avoid freeze-thaw cycles.

Specificity:

LTBP1 polyclonal antibody detects endogenous levels of LTBP1 protein.

DATA:



Western blot (WB) analysis of LTBP1 polyclonal antibody at 1:500 dilution

Lane1: HEK293T whole cell lysate

Lane2: Raw264.7 whole cell lysate

Lane3: H9C2 whole cell lysate

Note:

For research use only, not for use in diagnostic procedure.

Bioworld Technology, Inc.

Add: 1660 South Highway 100, Suite 500 St. Louis Park, MN 55416, USA.

Email: info@bioworld.com

Tel: 6123263284

Fax: 6122933841

Bioworld technology, co. Ltd.

Add: No 9, weidi road Qixia District Nanjing, 210046, P. R. China.

Email: info@biogot.com

Tel: 0086-025-68037686

Fax: 0086-025-68035151