

LPHN2 polyclonal antibody

Catalog: BS60779

Host: Rabbit

Reactivity: Human, Mouse, Rat

BackGround:

The Latrophilin family of G protein-coupled receptors consists of three members, latrophilin-1, 2 and 3, each of which displays distinct tissue distribution and function. Latrophilin-1, the most characterized member of this family, acts as a receptor for α -latrotoxin, a component of venom from the black widow spider. Binding of α -latrotoxin to latrophilin-1 triggers synaptic vesicle exocytosis via both Ca^{2+} -dependent and -independent mechanisms, resulting in vesicle depletion. Latrophilin-1 is abundant in brain and present in endocrine cells. Latrophilin-3 is also brain-specific, whereas latrophilin-2 expression is ubiquitous.

Product:

1 mg/ml in Phosphate buffered saline (PBS) with 15 mM sodium azide, approx. pH 7.2.

Molecular Weight:

~ 163 kDa

Swiss-Prot:

O95490

Purification&Purity:

The antibody was affinity-purified from rabbit antiserum by affinity-chromatography using epitope-specific immunogen and the purity is > 95% (by SDS-PAGE).

Applications:

WB: 1:500~1:1000

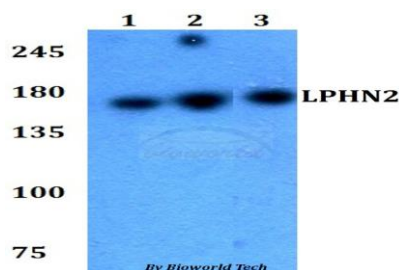
Storage&Stability:

Store at 4 °C short term. Aliquot and store at -20 °C long term. Avoid freeze-thaw cycles.

Specificity:

LPHN2 polyclonal antibody detects endogenous levels of LPHN2 protein.

DATA:



Western blot (WB) analysis of LPHN2 polyclonal antibody at 1:500 dilution

Lane1: HEK293T whole cell lysate

Lane2: Raw264.7 whole cell lysate

Lane3: PC12 whole cell lysate

Note:

For research use only, not for use in diagnostic procedure.

Bioworld Technology, Inc.

Add: 1660 South Highway 100, Suite 500 St. Louis Park, MN 55416, USA.

Email: info@bioworld.com

Tel: 6123263284

Fax: 6122933841

Bioworld technology, co. Ltd.

Add: No 9, weidi road Qixia District Nanjing, 210046, P. R. China.

Email: info@biogol.com

Tel: 0086-025-68037686

Fax: 0086-025-68035151