

RBL1 polyclonal antibody

Catalog: BS60760

Host: Rabbit

Reactivity: Human, Mouse, Rat

BackGround:

The human retinoblastoma gene product plays an important role in the negative regulation of cell proliferation. Functional inactivation of Rb can be mediated either through mutation or as a consequence of interaction with DNA tumor virus encoded proteins. pRb and the structurally related p107 form complexes with E2F, a transcription factor originally identified through its role in transcriptional activation of the adenovirus E2 promoter. Moreover, pRb and p107 share a high degree of structural homology in the adenovirus E1A binding domain (i.e. "pocket region") that is believed to play a primary role in the function of these proteins. A protein designated p130 shows a high degree of identity with pRb and p107 and also possesses a pocket region.

Product:

1 mg/ml in Phosphate buffered saline (PBS) with 15 mM sodium azide, approx. pH 7.2.

Molecular Weight:

~ 121 kDa

Swiss-Prot:

P28749

Purification&Purity:

The antibody was affinity-purified from rabbit antiserum by affinity-chromatography using epitope-specific immunogen and the purity is > 95% (by SDS-PAGE).

Applications:

WB: 1:500~1:1000

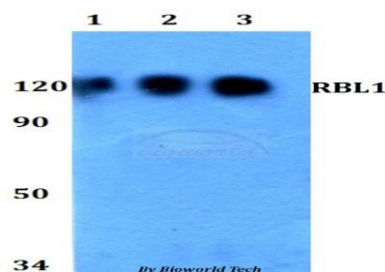
Storage&Stability:

Store at 4 °C short term. Aliquot and store at -20 °C long term. Avoid freeze-thaw cycles.

Specificity:

RBL1 polyclonal antibody detects endogenous levels of RBL1 protein.

DATA:



Western blot (WB) analysis of RBL1 polyclonal antibody at 1:500 dilution

Lane1:HEK293T whole cell lysate

Lane2:Raw264.7 whole cell lysate

Lane3:PC12 whole cell lysate

Note:

For research use only, not for use in diagnostic procedure.

Bioworld Technology, Inc.

Add: 1660 South Highway 100, Suite 500 St. Louis Park, MN 55416, USA.

Email: info@bioworld.com

Tel: 6123263284

Fax: 6122933841

Bioworld technology, co. Ltd.

Add: No 9, weidi road Qixia District Nanjing, 210046, P. R. China.

Email: info@biogot.com

Tel: 0086-025-68037686

Fax: 0086-025-68035151