

## APOBR polyclonal antibody

Catalog: BS60755

Host: Rabbit

Reactivity: Human, Rat

### BackGround:

ApoB48R (apolipoprotein B48 receptor), also known as apolipoprotein B-100 receptor, is a 1,088 amino acid protein that functions as a macrophage receptor by binding to apoB of dietary triglyceride-rich lipoproteins or to a similar apoB-like domain in hypertriglyceridemic very low density lipoprotein (HTG-VLDL). ApoB48R may contribute necessary lipids, lipid-soluble vitamins and other nutrients to reticuloendothelial cells. Significantly elevated plasma triglyceride levels may cause apoB48R to be a factor in foam cell formation, endothelial dysfunction and atherothrombogenesis. ApoB48R also mediates the swift, high-affinity uptake of chylomicrons, HTG-VLDL and trypsinized VLDL lacking apoE in in vitro macrophages. Conserved in chimpanzee, dog, cow, mouse and rat, apoB48R is ubiquitously expressed in all tissues, except skeletal muscle, with high expression in lung and placenta, and low expression in brain and heart. ApoB48R is encoded by a gene that maps to human chromosome 16p11.2 and exists as three alternatively spliced isoforms.

### Product:

1 mg/ml in Phosphate buffered saline (PBS) with 15 mM sodium azide, approx. pH 7.2.

### Molecular Weight:

~ 115 kDa

### Swiss-Prot:

Q0VD83

### Purification&Purity:

The antibody was affinity-purified from rabbit antiserum by affinity-chromatography using epitope-specific immunogen and the purity is > 95% (by SDS-PAGE).

### Applications:

WB: 1:500~1:1000

IHC: 1:50~1:200

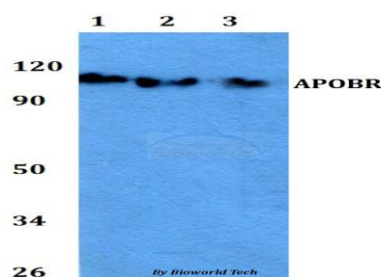
### Storage&Stability:

Store at 4 °C short term. Aliquot and store at -20 °C long term. Avoid freeze-thaw cycles.

### Specificity:

APOBR polyclonal antibody detects endogenous levels of APOBR protein.

### DATA:

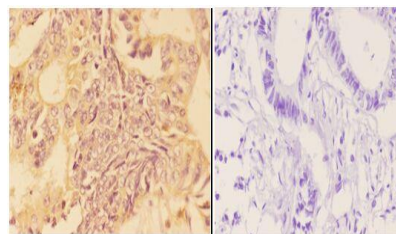


Western blot (WB) analysis of APOBR polyclonal antibody at 1:500 dilution

Lane1:A549 whole cell lysate

Lane2:MCF-7 whole cell lysate

Lane3:PC12 whole cell lysate



BS60755  
Lot CN45141

Immunohistochemistry (IHC) analyzes of APOBR pAb in paraffin-embedded human rectum carcinoma tissue at 1:50, showing cytoplasmic staining. Negative control (the right) Using PBS instead of primary antibody, secondary antibody is Goat Anti-Rabbit IgG-biotin followed by avidin-peroxidase.

### Note:

For research use only, not for use in diagnostic procedure.

### Bioworld Technology, Inc.

Add: 1660 South Highway 100, Suite 500 St. Louis Park, MN 55416, USA.

Email: [info@bioworld.com](mailto:info@bioworld.com)

Tel: 6123263284

Fax: 6122933841

### Bioworld technology, co. Ltd.

Add: No 9, weidi road Qixia District Nanjing, 210046, P. R. China.

Email: [info@biogot.com](mailto:info@biogot.com)

Tel: 0086-025-68037686

Fax: 0086-025-68035151



## PRODUCT DATA SHEET

Bioworld Technology, Inc.

---

---

### **Bioworld Technology, Inc.**

**Add:** 1660 South Highway 100, Suite 500 St. Louis Park,  
MN 55416, USA.

**Email:** [info@bioworld.com](mailto:info@bioworld.com)

**Tel:** 6123263284

**Fax:** 6122933841

### **Bioworld technology, co. Ltd.**

**Add:** No 9, weidi road Qixia District Nanjing, 210046,  
P. R. China.

**Email:** [info@biogot.com](mailto:info@biogot.com)

**Tel:** 0086-025-68037686

**Fax:** 0086-025-68035151