

## TUBGCP2 polyclonal antibody

Catalog: BS60743

Host: Rabbit

Reactivity: Human, Mouse, Rat

### BackGround:

The  $\gamma$ -Tubulin complex is composed of  $\gamma$  Tubulin and the  $\gamma$ -Tubulin complex associated proteins GCP2, GCP3, GCP4, GCP5 and GCP6, all of which are essential components of microtubule organizing centers.  $\gamma$ -Tubulin complex components are localized to both the centrosome, where they are involved in microtubule nucleation, and to the cytoplasm, where they exist as soluble complexes that can be recruited to the centrosome as needed. Although the GCP proteins are related, they have distinct roles which contribute to the proper function of the  $\gamma$ -Tubulin complex. GCP2 ( $\gamma$ -Tubulin complex component 2), also known as TUBGCP2 or SPBC97 (spindle pole body protein Spc97 homolog) is a ubiquitously expressed 902 amino acid protein that localizes to the centrosome and is involved in microtubule nucleation.

### Product:

1 mg/ml in Phosphate buffered saline (PBS) with 15 mM sodium azide, approx. pH 7.2.

### Molecular Weight:

~ 103 kDa

### Swiss-Prot:

Q9BSJ2

### Purification&Purity:

The antibody was affinity-purified from rabbit antiserum by affinity-chromatography using epitope-specific immunogen and the purity is > 95% (by SDS-PAGE).

### Applications:

WB: 1:500~1:1000

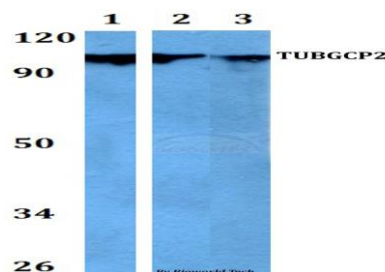
### Storage&Stability:

Store at 4 °C short term. Aliquot and store at -20 °C long term. Avoid freeze-thaw cycles.

### Specificity:

TUBGCP2 polyclonal antibody detects endogenous levels of TUBGCP2 protein.

### DATA:



Western blot (WB) analysis of TUBGCP2 polyclonal antibody at 1:500 dilution

Lane1: HEK293T whole cell lysate

Lane2: Raw264.7 whole cell lysate

Lane3: PC12 whole cell lysate

### Note:

For research use only, not for use in diagnostic procedure.

### Bioworld Technology, Inc.

Add: 1660 South Highway 100, Suite 500 St. Louis Park, MN 55416, USA.

Email: [info@bioworld.com](mailto:info@bioworld.com)

Tel: 6123263284

Fax: 6122933841

### Bioworld technology, co. Ltd.

Add: No 9, weidi road Qixia District Nanjing, 210046, P. R. China.

Email: [info@biogot.com](mailto:info@biogot.com)

Tel: 0086-025-68037686

Fax: 0086-025-68035151