

## NBPF6 polyclonal antibody

Catalog: BS60704

Host: Rabbit

Reactivity: Human, Mouse, Rat

### BackGround:

Members of the neuroblastoma breakpoint family are encoded by genes that map to a region of segmental duplications on human chromosome 1. Both NBPF4 (neuroblastoma breakpoint family member 4) and NBPF6 (neuroblastoma breakpoint family member 6) are cytoplasmic proteins that belong to the NBPF family. NBPF4 contains 123 amino acids and is expressed in testis, while NBPF6 consists of 638 amino acids and contains 3 NBPF domains. Like other NBPF family members, both proteins are encoded by genes that map to human chromosome 1p13.3. Human chromosome 1 spans 260 million base pairs, contains over 3,000 genes, comprises nearly 8% of the human genome and houses a large number of disease-associated genes, including those that are involved in familial adenomatous polyposis, Stickler syndrome, Parkinson's disease, Gaucher disease, schizophrenia and Usher syndrome.

### Product:

1 mg/ml in Phosphate buffered saline (PBS) with 15 mM sodium azide, approx. pH 7.2.

### Molecular Weight:

~ 72 kDa

### Swiss-Prot:

Q5VWK0

### Purification&Purity:

The antibody was affinity-purified from rabbit antiserum by affinity-chromatography using epitope-specific im-

munogen and the purity is &gt; 95% (by SDS-PAGE).

### Applications:

WB: 1:500~1:1000

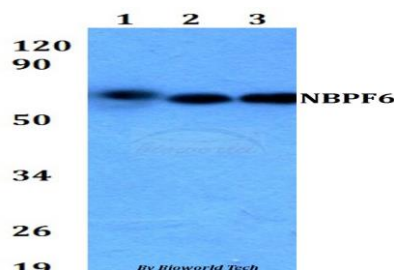
### Storage&Stability:

Store at 4 °C short term. Aliquot and store at -20 °C long term. Avoid freeze-thaw cycles.

### Specificity:

NBPF6 polyclonal antibody detects endogenous levels of NBPF6 protein.

### DATA:



Western blot (WB) analysis of NBPF6 polyclonal antibody at 1:500 dilution

Lane1: HEK293T whole cell lysate

Lane2: Raw264.7 whole cell lysate

Lane3: H9C2 whole cell lysate

### Note:

For research use only, not for use in diagnostic procedure.

### Bioworld Technology, Inc.

Add: 1660 South Highway 100, Suite 500 St. Louis Park, MN 55416, USA.

Email: [info@bioworld.com](mailto:info@bioworld.com)

Tel: 6123263284

Fax: 6122933841

### Bioworld technology, co. Ltd.

Add: No 9, weidi road Qixia District Nanjing, 210046, P. R. China.

Email: [info@biogol.com](mailto:info@biogol.com)

Tel: 0086-025-68037686

Fax: 0086-025-68035151