

## MMP28 polyclonal antibody

Catalog: BS60677

Host: Rabbit

Reactivity: Human, Mouse, Rat

### BackGround:

Epilysin, also known as matrix metalloproteinase-28 (MMP-28), is a secreted protein that belongs to the peptidase M10A family. Matrix metalloproteinase proteins are responsible for the breakdown of the extracellular matrix which is important for normal physiological processes such as tissue remodeling, reproduction and embryonic development. Epilysin is produced by proliferating keratinocytes and is responsible for mediating the degradation of casein. Its expression is upregulated in response to injury of the skin suggesting that Epilysin may be involved in tissue repair and homeostasis. In addition, Epilysin may function predominantly in the nervous system. Incubation of Epilysin with rat embryonic brain tissue results in the degradation of myelin proteins. In Xenopus, Epilysin localizes to nerves and is upregulated during neurulation. This suggests that Epilysin plays an evolutionarily conserved role in neural development and may be involved in modulating the axonal-glial extracellular environment.

### Product:

1 mg/ml in Phosphate buffered saline (PBS) with 15 mM sodium azide, approx. pH 7.2.

### Molecular Weight:

~ 59 kDa

### Swiss-Prot:

Q9H239

### Purification&Purity:

The antibody was affinity-purified from rabbit antiserum by affinity-chromatography using epitope-specific immunogen and the purity is > 95% (by SDS-PAGE).

### Applications:

WB: 1:500~1:1000

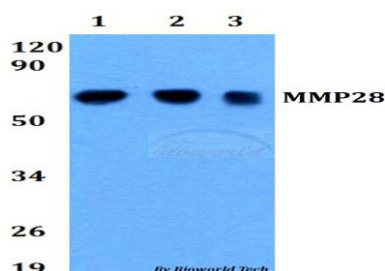
### Storage&Stability:

Store at 4 °C short term. Aliquot and store at -20 °C long term. Avoid freeze-thaw cycles.

### Specificity:

MMP28 polyclonal antibody detects endogenous levels of MMP28 protein.

### DATA:



Western blot (WB) analysis of MMP28 polyclonal antibody at 1:500 dilution

Lane1:HEK293T whole cell lysate

Lane2:Raw264.7 whole cell lysate

Lane3:PC12 whole cell lysate

### Note:

For research use only, not for use in diagnostic procedure.

### Bioworld Technology, Inc.

Add: 1660 South Highway 100, Suite 500 St. Louis Park, MN 55416, USA.

Email: [info@bioworld.com](mailto:info@bioworld.com)

Tel: 6123263284

Fax: 6122933841

### Bioworld technology, co. Ltd.

Add: No 9, weidi road Qixia District Nanjing, 210046, P. R. China.

Email: [info@biogot.com](mailto:info@biogot.com)

Tel: 0086-025-68037686

Fax: 0086-025-68035151