

## TFCP2L1 polyclonal antibody

Catalog: BS60664

Host: Rabbit

Reactivity: Human, Mouse, Rat

### BackGround:

The long terminal repeat binding protein-1 (LBP-1) mammalian family of transcription factors are proteins that stimulate transcription in HeLa cells from the major late promoter of simian virus 40 in vitro. The two related human LBP-1 genes are TFCP2A, which encodes the alternatively spliced transcripts LBP-1a and LBP-1b, and TFCP2C, which encodes LBP-1c and LBP-1d. LBP-9, also designated transcription factor CP2-like 1 (TFCP2L1), is a protein of 479 amino acids. LBP-9 shows 83% sequence homology with LBP-1b and acts as a suppressor factor inhibiting the stimulation effect of LBP-1b. LBP-9 may regulate the P450scc reporter activity through the -155/-131 element.

### Product:

1 mg/ml in Phosphate buffered saline (PBS) with 15 mM sodium azide, approx. pH 7.2.

### Molecular Weight:

~ 55 kDa

### Swiss-Prot:

Q9NZI6

### Purification&Purity:

The antibody was affinity-purified from rabbit antiserum by affinity-chromatography using epitope-specific immunogen and the purity is > 95% (by SDS-PAGE).

### Applications:

WB: 1:500~1:1000

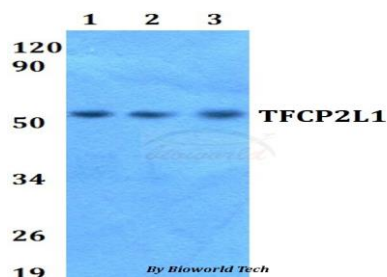
### Storage&Stability:

Store at 4 °C short term. Aliquot and store at -20 °C long term. Avoid freeze-thaw cycles.

### Specificity:

TFCP2L1 polyclonal antibody detects endogenous levels of TFCP2L1 protein.

### DATA:



Western blot (WB) analysis of TFCP2L1 polyclonal antibody at 1:500 dilution

Lane1: HEK293T whole cell lysate

Lane2: Raw264.7 whole cell lysate

Lane3: H9C2 whole cell lysate

### Note:

For research use only, not for use in diagnostic procedure.

### Bioworld Technology, Inc.

Add: 1660 South Highway 100, Suite 500 St. Louis Park, MN 55416, USA.

Email: [info@bioworld.com](mailto:info@bioworld.com)

Tel: 6123263284

Fax: 6122933841

### Bioworld technology, co. Ltd.

Add: No 9, weidi road Qixia District Nanjing, 210046, P. R. China.

Email: [info@biogol.com](mailto:info@biogol.com)

Tel: 0086-025-68037686

Fax: 0086-025-68035151