

## RPL3L polyclonal antibody

Catalog: BS60631

Host: Rabbit

Reactivity: Human, Mouse, Rat

### BackGround:

A full-length cDNA encoding a novel ribosomal protein L3 gene was isolated and sequenced. The deduced protein sequence is 407 amino acids long and shows 77% identity to other known mammalian ribosomal protein L3 genes, which are themselves highly conserved. Southern blot analysis of human genomic DNA suggests that this novel gene is single copy. While the previously identified human ribosomal protein L3 gene has ubiquitous expression in all tissues surveyed, the novel gene described herein is strongly expressed in skeletal muscle and heart tissue, with low levels of expression in the pancreas. This novel gene, RPL3L, is located in a gene-rich region near the PKD1 and TSC2 genes on chromosome 16p13.3.

### Product:

1 mg/ml in Phosphate buffered saline (PBS) with 15 mM sodium azide, approx. pH 7.2.

### Molecular Weight:

~ 46 kDa

### Swiss-Prot:

Q92901

### Purification&Purity:

The antibody was affinity-purified from rabbit antiserum by affinity-chromatography using epitope-specific immunogen and the purity is > 95% (by SDS-PAGE).

### Applications:

WB: 1:500~1:1000

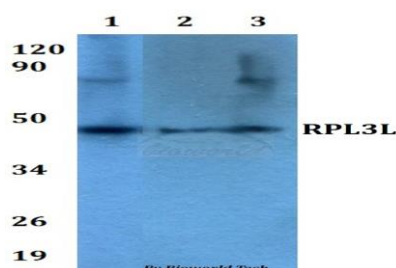
### Storage&Stability:

Store at 4 °C short term. Aliquot and store at -20 °C long term. Avoid freeze-thaw cycles.

### Specificity:

RPL3L polyclonal antibody detects endogenous levels of RPL3L protein.

### DATA:



Western blot (WB) analysis of RPL3L polyclonal antibody at 1:500 dilution

Lane1:MCF-7 whole cell lysate

Lane2:sp2/0 whole cell lysate

Lane3:PC12 whole cell lysate

### Note:

For research use only, not for use in diagnostic procedure.

### Bioworld Technology, Inc.

Add: 1660 South Highway 100, Suite 500 St. Louis Park, MN 55416, USA.

Email: [info@bioworld.com](mailto:info@bioworld.com)

Tel: 6123263284

Fax: 6122933841

### Bioworld technology, co. Ltd.

Add: No 9, weidi road Qixia District Nanjing, 210046, P. R. China.

Email: [info@biogol.com](mailto:info@biogol.com)

Tel: 0086-025-68037686

Fax: 0086-025-68035151