

MAS1L polyclonal antibody

Catalog: BS60616

Host: Rabbit

Reactivity: Human, Mouse, Rat

BackGround:

The proto-oncogene MAS1 is a G protein-coupled receptor located on the plasma membrane. In transfected NIH/3T3 cells, MAS1 has a weak focus-inducing activity. MAS1 is an antagonist of the AT1 receptor (Angiotensin II type 1 receptor), inhibiting the actions of Angiotensin II. MAS1L (MAS1-like), also known as MAS-L or MRG (Mas-related G-protein coupled receptor MRG), is a 378 amino acid multi-pass membrane protein that belongs to the G-protein coupled receptor 1 (GPCR) family. MAS1 related proteins are thought to regulate nociceptor function and development, including the sensation or modulation of pain.

Product:

1 mg/ml in Phosphate buffered saline (PBS) with 15 mM sodium azide, approx. pH 7.2.

Molecular Weight:

~ 42 kDa

Swiss-Prot:

P35410

Purification&Purity:

The antibody was affinity-purified from rabbit antiserum by affinity-chromatography using epitope-specific immunogen and the purity is > 95% (by SDS-PAGE).

Applications:

WB: 1:500~1:1000

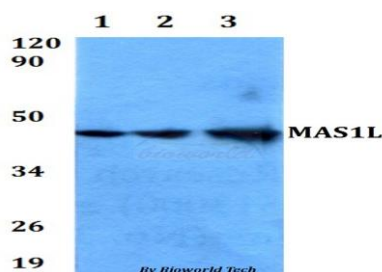
Storage&Stability:

Store at 4 °C short term. Aliquot and store at -20 °C long term. Avoid freeze-thaw cycles.

Specificity:

MAS1L polyclonal antibody detects endogenous levels of MAS1L protein.

DATA:



Western blot (WB) analysis of MAS1L polyclonal antibody at 1:500 dilution

Lane1: HEK293T whole cell lysate

Lane2: NIH-3T3 whole cell lysate

Lane3: PC12 whole cell lysate

Note:

For research use only, not for use in diagnostic procedure.

Bioworld Technology, Inc.

Add: 1660 South Highway 100, Suite 500 St. Louis Park, MN 55416, USA.

Email: info@bioworld.com

Tel: 6123263284

Fax: 6122933841

Bioworld technology, co. Ltd.

Add: No 9, weidi road Qixia District Nanjing, 210046, P. R. China.

Email: info@biogol.com

Tel: 0086-025-68037686

Fax: 0086-025-68035151