

## MTNR1A polyclonal antibody

Catalog: BS60605

Host: Rabbit

Reactivity: Human, Mouse, Rat

### BackGround:

Melatonin (Mel), a hormone secreted by the pineal gland, is expressed at night in response to the circadian clock. Melatonin is thought to be involved in regulating reproductive physiological development and the progression of sexual maturation, and it is also thought to play a role in tumorigenesis. The melatonin receptors, MEL-1A-R and MEL-1B-R, are members of the super-family of guanine nucleotide-binding regulatory protein (G protein)-coupled receptors. Signaling through the melatonin receptors inhibits adenylate cyclase and stimulates phospholipase C $\beta$  upon activation of pertussis toxin (PTX)-sensitive G proteins. MEL-1A-R may be involved in pacing the biological clock. However, both MEL-1A-R and MEL-1B-R are implicated in controlling cellular growth in response to melatonin.

### Product:

1 mg/ml in Phosphate buffered saline (PBS) with 15 mM sodium azide, approx. pH 7.2.

### Molecular Weight:

~ 39 kDa

### Swiss-Prot:

P48039

### Purification&Purity:

The antibody was affinity-purified from rabbit antiserum by affinity-chromatography using epitope-specific immunogen and the purity is > 95% (by SDS-PAGE).

### Applications:

WB: 1:500~1:1000

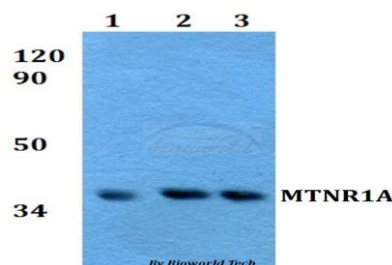
### Storage&Stability:

Store at 4 °C short term. Aliquot and store at -20 °C long term. Avoid freeze-thaw cycles.

### Specificity:

MTNR1A polyclonal antibody detects endogenous levels of MTNR1A protein.

### DATA:



Western blot (WB) analysis of MTNR1A polyclonal antibody at 1:500 dilution

Lane1:A549 whole cell lysate

Lane2:sp2/0 whole cell lysate

Lane3:PC12 whole cell lysate

### Note:

For research use only, not for use in diagnostic procedure.

### Bioworld Technology, Inc.

Add: 1660 South Highway 100, Suite 500 St. Louis Park, MN 55416, USA.

Email: [info@bioworld.com](mailto:info@bioworld.com)

Tel: 6123263284

Fax: 6122933841

### Bioworld technology, co. Ltd.

Add: No 9, weidi road Qixia District Nanjing, 210046, P. R. China.

Email: [info@biogol.com](mailto:info@biogol.com)

Tel: 0086-025-68037686

Fax: 0086-025-68035151