

RTDR1 polyclonal antibody

Catalog: BS60603

Host: Rabbit

Reactivity: Human, Mouse, Rat

BackGround:

RTDR1 (Rhabdoid tumor deletion region protein 1) is a 348 amino acid protein that is expressed in adult spinal cord, skeletal muscle, cerebellum and spleen, as well in some rhabdoid tumors. The gene encoding RTDR1 maps to human chromosome 22, which contains over 500 genes and about 49 million bases.

Product:

1 mg/ml in Phosphate buffered saline (PBS) with 15 mM sodium azide, approx. pH 7.2.

Molecular Weight:

~ 39 kDa

Swiss-Prot:

Q9UHP6

Purification&Purity:

The antibody was affinity-purified from rabbit antiserum by affinity-chromatography using epitope-specific immunogen and the purity is > 95% (by SDS-PAGE).

Applications:

WB: 1:500~1:1000

Storage&Stability:

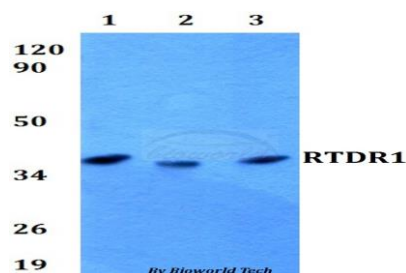
Store at 4 °C short term. Aliquot and store at -20 °C long

term. Avoid freeze-thaw cycles.

Specificity:

RTDR1 polyclonal antibody detects endogenous levels of RTDR1 protein.

DATA:



Western blot (WB) analysis of RTDR1 polyclonal antibody at 1:500 dilution

Lane1:HEK293T whole cell lysate

Lane2:Raw264.7 whole cell lysate

Lane3:PC12 whole cell lysate

Note:

For research use only, not for use in diagnostic procedure.

Bioworld Technology, Inc.

Add: 1660 South Highway 100, Suite 500 St. Louis Park, MN 55416, USA.

Email: info@bioworld.com

Tel: 6123263284

Fax: 6122933841

Bioworld technology, co. Ltd.

Add: No 9, weidi road Qixia District Nanjing, 210046, P. R. China.

Email: info@biogol.com

Tel: 0086-025-68037686

Fax: 0086-025-68035151