

MAPRE2 polyclonal antibody

Catalog: BS60593

Host: Rabbit

Reactivity: Human, Mouse, Rat

BackGround:

APC (adenomatous polyposis coli) is a tumor suppressor gene that is frequently mutated in colorectal cancers and is one of the earliest indicators of colorectal carcinogenesis. APC is widely expressed and is largely similar to the related brain-specific homolog APCL. These proteins both associate with β -catenin and functionally regulate the levels of intracellular β -catenin. Additionally, these homologs interact with the microtubule cytoskeletal protein EB1 to regulate cell cycle progression or growth control. EB1 family proteins (EB1, RP1 (EB2) and EB3) interact with cytoplasmic microtubules in interphase cells, with mitotic spindles, and with the APC tumor suppressor gene. The functional inactivation of the APC gene product is a key event in colorectal tumorigenesis. RP1 is localized in the plus ends of microtubule networks in the presence or absence of APC. The gene which encodes RP1 maps to human chromosome 18q12.1.

Product:

1 mg/ml in Phosphate buffered saline (PBS) with 15 mM sodium azide, approx. pH 7.2.

Molecular Weight:

~ 37 kDa

Swiss-Prot:

Q15555

Purification&Purity:

The antibody was affinity-purified from rabbit antiserum by affinity-chromatography using epitope-specific im-

munogen and the purity is > 95% (by SDS-PAGE).

Applications:

WB: 1:500~1:1000

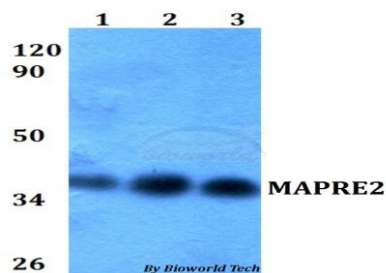
Storage&Stability:

Store at 4 °C short term. Aliquot and store at -20 °C long term. Avoid freeze-thaw cycles.

Specificity:

MAPRE2 polyclonal antibody detects endogenous levels of MAPRE2 protein.

DATA:



Western blot (WB) analysis of MAPRE2 polyclonal antibody at 1:500 dilution

Lane1: HEK293T whole cell lysate

Lane2: Raw264.7 whole cell lysate

Lane3: H9C2 whole cell lysate

Note:

For research use only, not for use in diagnostic procedure.

Bioworld Technology, Inc.

Add: 1660 South Highway 100, Suite 500 St. Louis Park, MN 55416, USA.

Email: info@bioworld.com

Tel: 6123263284

Fax: 6122933841

Bioworld technology, co. Ltd.

Add: No 9, weidi road Qixia District Nanjing, 210046, P. R. China.

Email: info@biogot.com

Tel: 0086-025-68037686

Fax: 0086-025-68035151