

## NEIL2 polyclonal antibody

Catalog: BS60591

Host: Rabbit

Reactivity: Human, Rat

### BackGround:

NEIL1, NEIL2 and NEIL3, also known as Endonuclease VIII-like 1, 2 and 3 or DNA-(apurinic or apyrimidinic site) lyase NEIL 1, 2 and 3, are nuclear proteins involved in the repair of DNA damaged by oxidation. The NEIL proteins belong to the FPG family of proteins. They act as DNA glycosylases that can recognize and remove damaged bases, leaving an abasic site. NEIL3, however, lacks the proline residue at the N-terminus which acts as the active site residue found in NEIL1 and NEIL2. NEIL1 is a ubiquitously expressed protein that is up-regulated during S-phase. NEIL2 is expressed primarily in testis, heart, skeletal muscle, placenta, brain, kidney and liver while NEIL3 is detected primarily in thymus and testis.

### Product:

1 mg/ml in Phosphate buffered saline (PBS) with 15 mM sodium azide, approx. pH 7.2.

### Molecular Weight:

~ 37 kDa

### Swiss-Prot:

Q969S2

### Purification&Purity:

The antibody was affinity-purified from rabbit antiserum by affinity-chromatography using epitope-specific immunogen and the purity is > 95% (by SDS-PAGE).

### Applications:

WB: 1:500~1:1000

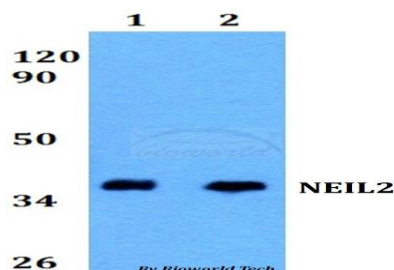
### Storage&Stability:

Store at 4 °C short term. Aliquot and store at -20 °C long term. Avoid freeze-thaw cycles.

### Specificity:

NEIL2 polyclonal antibody detects endogenous levels of NEIL2 protein.

### DATA:



Western blot (WB) analysis of NEIL2 polyclonal antibody at 1:500 dilution

Lane1:HEK293T whole cell lysate

Lane2:PC12 whole cell lysate

### Note:

For research use only, not for use in diagnostic procedure.

### Bioworld Technology, Inc.

Add: 1660 South Highway 100, Suite 500 St. Louis Park, MN 55416, USA.

Email: [info@bioworld.com](mailto:info@bioworld.com)

Tel: 6123263284

Fax: 6122933841

### Bioworld technology, co. Ltd.

Add: No 9, weidi road Qixia District Nanjing, 210046, P. R. China.

Email: [info@biogot.com](mailto:info@biogot.com)

Tel: 0086-025-68037686

Fax: 0086-025-68035151