

PRSS8 polyclonal antibody

Catalog: BS60585

Host: Rabbit

Reactivity: Human, Mouse, Rat

BackGround:

Prostasin, a serine protease first identified in prostate tissue, activates epithelial sodium channels in a variety of tissues. Though typically a membrane-anchored protein, free prostasin is also found in physiologic fluids and tissue culture media, indicating a mechanism for secretion from the cells as well. Aprotinin and other protease inhibitors suppress the channel-activating capacity of prostasin, while aldosterone increases prostasin expression and stimulates sodium uptake. In addition, DNA methylation negatively correlates with prostasin expression in cancer cells, while enforced reexpression decreases invasiveness as well as metastatic potential, implying that prostasin activity reflects epithelial cell physiology.

Product:

1 mg/ml in Phosphate buffered saline (PBS) with 15 mM sodium azide, approx. pH 7.2.

Molecular Weight:

~ 36 kDa

Swiss-Prot:

Q16651

Purification&Purity:

The antibody was affinity-purified from rabbit antiserum by affinity-chromatography using epitope-specific immunogen and the purity is > 95% (by SDS-PAGE).

Applications:

WB: 1:500~1:1000

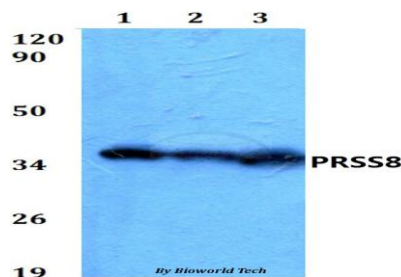
Storage&Stability:

Store at 4 °C short term. Aliquot and store at -20 °C long term. Avoid freeze-thaw cycles.

Specificity:

PRSS8 polyclonal antibody detects endogenous levels of PRSS8 protein.

DATA:



Western blot (WB) analysis of PRSS8 polyclonal antibody at 1:500 dilution

Lane1: HEK293T whole cell lysate

Lane2: Raw264.7 whole cell lysate

Lane3: PC12 whole cell lysate

Note:

For research use only, not for use in diagnostic procedure.

Bioworld Technology, Inc.

Add: 1660 South Highway 100, Suite 500 St. Louis Park, MN 55416, USA.

Email: info@bioworld.com

Tel: 6123263284

Fax: 6122933841

Bioworld technology, co. Ltd.

Add: No 9, weidi road Qixia District Nanjing, 210046, P. R. China.

Email: info@biogot.com

Tel: 0086-025-68037686

Fax: 0086-025-68035151