

## CSF3 polyclonal antibody

Catalog: BS60536

Host: Rabbit

Reactivity: Human, Mouse, Rat

### BackGround:

Granulocyte-colony stimulating factor, G-CSF, is a pleiotropic cytokine that influences differentiation, proliferation and activation of the neutrophilic granulocyte lineage. The murine G-CSF cDNA encodes a 208 amino acid precursor containing a 30 amino acid signal peptide that is proteolytically cleaved to form a 178 amino acid residue mature protein. Two G-CSF cDNAs, which are identical except for a three amino acid deletion in the N-terminus of one form of the protein, have been isolated from human cells. Murine and human G-CSF share 73% sequence identity at the amino acid level. G-CSF signals through the G-CSF receptor, G-CSFR, a heavily glycosylated 812 amino acid polypeptide with a single transmembrane domain. Stimulation of the G-CSFR results in the activation of the Ras/MAPK pathway and phosphorylation of the adaptor protein Shc. Studies indicate that the kinases Lyn and Syk and the transcription factor Stat3 are activated in response to G-CSF stimulation.

### Product:

1 mg/ml in Phosphate buffered saline (PBS) with 15 mM sodium azide, approx. pH 7.2.

### Molecular Weight:

~ 22 kDa

### Swiss-Prot:

P09919

### Purification&Purity:

The antibody was affinity-purified from rabbit antiserum by affinity-chromatography using epitope-specific im-

munogen and the purity is > 95% (by SDS-PAGE).

### Applications:

WB: 1:500~1:1000

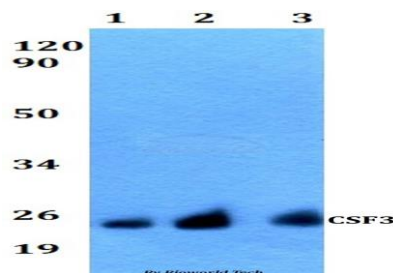
### Storage&Stability:

Store at 4 °C short term. Aliquot and store at -20 °C long term. Avoid freeze-thaw cycles.

### Specificity:

CSF3 polyclonal antibody detects endogenous levels of CSF3 protein.

### DATA:



Western blot (WB) analysis of CSF3 polyclonal antibody at 1:500 dilution

Lane1:Hela whole cell lysate

Lane2:Raw264.7 whole cell lysate

Lane3:PC12 whole cell lysate

### Note:

For research use only, not for use in diagnostic procedure.

### Bioworld Technology, Inc.

Add: 1660 South Highway 100, Suite 500 St. Louis Park, MN 55416, USA.

Email: [info@bioworld.com](mailto:info@bioworld.com)

Tel: 6123263284

Fax: 6122933841

### Bioworld technology, co. Ltd.

Add: No 9, weidi road Qixia District Nanjing, 210046, P. R. China.

Email: [info@biogot.com](mailto:info@biogot.com)

Tel: 0086-025-68037686

Fax: 0086-025-68035151