

RLN2 polyclonal antibody

Catalog: BS60533

Host: Rabbit

Reactivity: Human, Mouse, Rat

BackGround:

Relaxin 1 (also referred to as Relaxin or RLXH1) is a peptide hormone produced by the corpora lutea of the ovary during pregnancy in many mammalian species, including human. The secretion of the hormone into the blood stream just before parturition results in a marked softening and lengthening of the pubic symphysis and a softening of the cervix, which facilitates the birth process. By inhibiting uterine contractions, Relaxin 1 may influence the timing of parturition. Like insulin, Relaxin 1 consists of two peptide chains, A and B, covalently linked by disulfide bonds. By further analogy to insulin, the two peptides are synthesized as a single-chain precursor polypeptide with the B chain at the amino-terminus. The gene that encodes the human Relaxin 1 protein maps to chromosome 9. Relaxin 2, a related protein, is selectively expressed in the ovary during pregnancy. The gene that encodes the human Relaxin 2 protein also maps to chromosome 9.

Product:

1 mg/ml in Phosphate buffered saline (PBS) with 15 mM sodium azide, approx. pH 7.2.

Molecular Weight:

~ 21 kDa

Swiss-Prot:

P04090

Purification&Purity:

The antibody was affinity-purified from rabbit antiserum by affinity-chromatography using epitope-specific im-

munogen and the purity is > 95% (by SDS-PAGE).

Applications:

WB: 1:500~1:1000

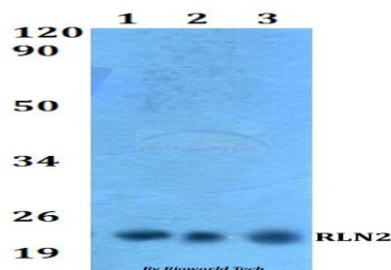
Storage&Stability:

Store at 4 °C short term. Aliquot and store at -20 °C long term. Avoid freeze-thaw cycles.

Specificity:

RLN2 polyclonal antibody detects endogenous levels of RLN2 protein.

DATA:



Western blot (WB) analysis of RLN2 polyclonal antibody at 1:500 dilution

Lane1: Jurkat whole cell lysate

Lane2: Raw264.7 whole cell lysate

Lane3: PC12 whole cell lysate

Note:

For research use only, not for use in diagnostic procedure.

Bioworld Technology, Inc.

Add: 1660 South Highway 100, Suite 500 St. Louis Park, MN 55416, USA.

Email: info@bioworld.com

Tel: 6123263284

Fax: 6122933841

Bioworld technology, co. Ltd.

Add: No 9, weidi road Qixia District Nanjing, 210046, P. R. China.

Email: info@biogot.com

Tel: 0086-025-68037686

Fax: 0086-025-68035151