

## BTF3L4 polyclonal antibody

Catalog: BS60514

Host: Rabbit

Reactivity: Human, Mouse, Rat

### BackGround:

The initiation of gene transcription involves the ordered assembly of a multiprotein complex on proximal promoter elements such as the TATA box. In addition to RNA polymerase II (Pol II), the transcription factor class II (TFII) family of proteins are required for initiation of transcription, as the first step in the formation of this initiation complex is the stable binding of TFIID to the TATA box. An additional TFII-related protein, BTF3, does not directly associate with the proximal promoter, but rather forms a stable complex with Pol II and facilitates Pol II assembly into the complex. The BTF3 gene is ubiquitously expressed and encodes two protein isoforms, BTF3a and BTF3b, which are produced from alternative splicing. The BTF3 proteins are identical, except that BTF3b lacks the first 44 amino acids at the N-terminal of BTF3a. As a consequence of this deletion, BTF3b is unable to induce transcription, despite being able to bind Pol II. Additionally, BTF3a and BTF3b associate with the widely expressed protein kinase casein kinase II. Casein kinase II phosphorylates BTF3a, as well as TFIIB, and is required for the efficient transcription of the tRNA and 5S rRNA genes by Pol III. BTF3 belongs to the NAC- $\beta$  family, which includes several related proteins, such as BTF3L1, BTF3L2, BTF3L3 and BTF3L4.

### Product:

1 mg/ml in Phosphate buffered saline (PBS) with 15 mM sodium azide, approx. pH 7.2.

### Molecular Weight:

~ 17 kDa

### Swiss-Prot:

Q96K17

### Purification&Purity:

The antibody was affinity-purified from rabbit antiserum by affinity-chromatography using epitope-specific immunogen and the purity is > 95% (by SDS-PAGE).

### Applications:

WB: 1:500~1:1000

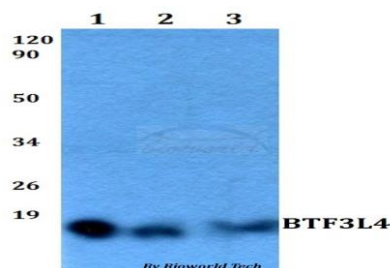
### Storage&Stability:

Store at 4 °C short term. Aliquot and store at -20 °C long term. Avoid freeze-thaw cycles.

### Specificity:

BTF3L4 polyclonal antibody detects endogenous levels of BTF3L4 protein.

### DATA:



Western blot (WB) analysis of BTF3L4 polyclonal antibody at 1:500 dilution

Lane1:HEK293T whole cell lysate

Lane2:sp2/0 whole cell lysate

Lane3:PC12 whole cell lysate

### Note:

For research use only, not for use in diagnostic procedure.

### Bioworld Technology, Inc.

Add: 1660 South Highway 100, Suite 500 St. Louis Park, MN 55416, USA.

Email: [info@bioworld.com](mailto:info@bioworld.com)

Tel: 6123263284

Fax: 6122933841

### Bioworld technology, co. Ltd.

Add: No 9, weidi road Qixia District Nanjing, 210046, P. R. China.

Email: [info@biogot.com](mailto:info@biogot.com)

Tel: 0086-025-68037686

Fax: 0086-025-68035151