

## CCL26 polyclonal antibody

Catalog: BS60482

Host: Rabbit

Reactivity: Human, Mouse, Rat

### Background:

Chemokines have been implicated in the regulation of stem/progenitor cell proliferation and movement. C-C chemokines myeloid progenitor inhibitory factor-1 (MPIF)-1 and eotaxin-2 (also known as MPIF-2, CK b-6 or small inducible cytokine A24) both map to chromosome 7q11.23. MPIF-1 has chemotactic activity on dendritic cells derived from either peripheral blood monocytes or cord blood CD34+ progenitors. It is also a potent suppressor of bone marrow low proliferative potential colony-forming cells. Eotaxin-2, which promotes chemotaxis and Ca<sup>2+</sup> mobilization in human eosinophils, exerts its activity solely through the CCR3 receptor. In addition, eotaxin-2 lacks suppressive activity against immature subsets of myeloid progenitors, which have been stimulated to proliferate by multiple growth factors. A related C-C chemokine, eotaxin-3, shares only 33% amino acid identity with eotaxin-2, but shares many characteristics with eotaxin-2. Eotaxin-3 induces migration of eosinophils and basophils at a 10-fold higher concentration than eotaxin-2. The gene which encodes eotaxin-3 maps to human chromosome 7q11.23.

### Product:

1 mg/ml in Phosphate buffered saline (PBS) with 0.05% sodium azide, approx. pH 7.6.

### Molecular Weight:

~ 11 kDa

### Swiss-Prot:

Q9Y258

### Purification&Purity:

The antibody was affinity-purified from rabbit antiserum

by affinity-chromatography using epitope-specific immunogen and the purity is > 98% (by SDS-PAGE).

### Applications:

WB: 1:500~1:1000

IHC: 1:50~1:203

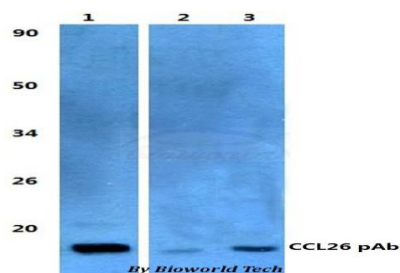
### Storage&Stability:

Store at 4 °C short term. Aliquot and store at -23 °C long term. Avoid freeze-thaw cycles.

### Specificity:

CCL26 polyclonal antibody detects endogenous levels of CCL26 protein.

### DATA:



Western blot (WB) analysis of CCL26 polyclonal antibody at 1:500 dilution

Lane1: HEK293T whole cell lysate

Lane2: sp2/0 whole cell lysate

Lane3: H9C5 whole cell lysate

### Note:

For research use only, not for use in diagnostic procedure.

### Bioworld Technology, Inc.

Add: 1660 South Highway 100, Suite 500 St. Louis Park, MN 55416, USA.

Email: [info@bioworld.com](mailto:info@bioworld.com)

Tel: 6123263284

Fax: 6122933841

### Bioworld technology, co. Ltd.

Add: No 9, weidi road Qixia District Nanjing, 210046, P. R. China.

Email: [info@biogot.com](mailto:info@biogot.com)

Tel: 0086-025-68037686

Fax: 0086-025-68035151