

## LIF polyclonal antibody

Catalog: BS60463

Host: Rabbit

Reactivity: Human, Mouse, Rat

### BackGround:

Embryonic stem (ES) cells are the focus of much research and represent great therapeutic potential as they can be propagated indefinitely in an undifferentiated state while possessing the ability to differentiate into all embryonic germ layers (endoderm, ectoderm and mesoderm) both in vivo and in vitro. LIF (leukemia inhibitory factor), also known as MLPLI (melanoma-derived LPL inhibitor), HILDA, DIA or CDF, is a 202 amino acid secreted protein and lymphoid factor that participates in the maintenance of ES cell pluripotency by suppressing spontaneous ES cell differentiation. Secreted LIF precursor is further processed into a biologically active glycoprotein. Expressed by a wide variety of cells including activated T lymphocytes, monocytes, mast cells and neuronal cells, LIF is suggested to promote survival and growth of axons in vitro and is involved in immune tolerance at the maternal-fetal interface. LIF may also participate in fat and bone metabolism and regulate epithelial conversion during kidney development.

### Product:

1 mg/ml in Phosphate buffered saline (PBS) with 0.05% sodium azide, approx. pH 7.2.

### Molecular Weight:

~ 22 kDa

### Swiss-Prot:

P15018

### Purification&Purity:

The antibody was affinity-purified from rabbit antiserum

by affinity-chromatography using epitope-specific immunogen and the purity is > 95% (by SDS-PAGE).

### Applications:

WB: 1:500~1:1000

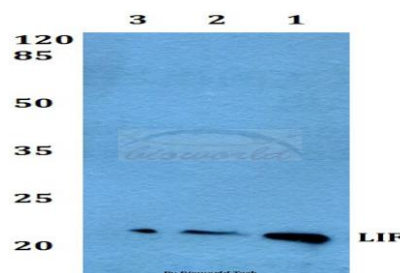
### Storage&Stability:

Store at 4 °C short term. Aliquot and store at -20 °C long term. Avoid freeze-thaw cycles.

### Specificity:

LIF polyclonal antibody detects endogenous levels of LIF protein.

### DATA:



Western blot (WB) analysis of LIF polyclonal antibody at 1:500 dilution

Lane1: Jurkat whole cell lysate

Lane2: NIH-3T3 whole cell lysate

Lane3: PC12 whole cell lysate

### Note:

For research use only, not for use in diagnostic procedure.

### Bioworld Technology, Inc.

Add: 1660 South Highway 100, Suite 500 St. Louis Park, MN 55416, USA.

Email: [info@bioworld.com](mailto:info@bioworld.com)

Tel: 6123263284

Fax: 6122933841

### Bioworld technology, co. Ltd.

Add: No 9, weidi road Qixia District Nanjing, 210046, P. R. China.

Email: [info@biogot.com](mailto:info@biogot.com)

Tel: 0086-025-68037686

Fax: 0086-025-68035151