

## p38/MAPK14 polyclonal antibody

Catalog: BS60458

Host: Rabbit

Reactivity: Human,Rat,Mouse

### BackGround:

p38 MAP kinase (MAPK), also called RK or CSBP, is the mammalian orthologue of the yeast HOG kinase that participates in a signaling cascade controlling cellular responses to cytokines and stress. Four isoforms of p38 MAPK, p38 $\alpha$ ,  $\beta$ ,  $\gamma$  (also known as Erk6 or SAPK3), and  $\delta$  (also known as SAPK4) have been identified. Similar to the SAPK/JNK pathway, p38 MAPK is activated by a variety of cellular stresses including osmotic shock, inflammatory cytokines, lipopolysaccharide (LPS), UV light, and growth factors. MKK3, MKK6, and SEK activate p38 MAPK by phosphorylation at Thr180 and Tyr182. Activated p38 MAPK has been shown to phosphorylate and activate MAPKAP kinase 2 and to phosphorylate the transcription factors ATF-2, Max, and MEF2. SB203580 (4-(4-fluorophenyl)-2-(4-methylsulfinylphenyl)-5-(4-pyridyl)-imidazole) is a selective inhibitor of p38 MAPK. This compound inhibits the activation of MAPKAPK-2 by p38 MAPK and subsequent phosphorylation of HSP27. SB203580 inhibits p38 MAPK catalytic activity by binding to the ATP-binding pocket, but does not inhibit phosphorylation of p38 MAPK by upstream kinases.

### Product:

1 mg/ml in Phosphate buffered saline (PBS) with 0.05% sodium azide, approx. pH 7.3.

### Molecular Weight:

~ 43 kDa

### Swiss-Prot:

Q16539

### Purification&Purity:

The antibody was affinity-purified from rabbit antiserum by affinity-chromatography using epitope-specific immunogen and the purity is > 95% (by SDS-PAGE).

### Applications:

WB: 1:500~1:1000

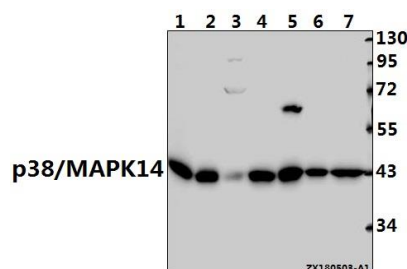
### Storage&Stability:

Store at 4 °C short term. Aliquot and store at -20 °C long term. Avoid freeze-thaw cycles.

### Specificity:

MAPK14 pAb detects endogenous levels of MAPK14 protein.

### DATA:



Western blot (WB) analysis of MAPK14 pAb at 1:500 dilution

Lane1:The Lung tissue lysate of Mouse(40ug)

Lane2:The Embryo tissue lysate of Mouse(40ug)

Lane3:The Brain tissue lysate of Rat(40ug)

Lane4:SGC7901 whole cell lysate(40ug)

Lane5:EC9706 whole cell lysate(40ug)

Lane6:HeLa whole cell lysate(40ug)

Lane7:Panc1 whole cell lysate(40ug)

### Note:

For research use only, not for use in diagnostic procedure.

### Bioworld Technology, Inc.

Add: 1660 South Highway 100, Suite 500 St. Louis Park, MN 55416, USA.

Email: [info@bioworld.com](mailto:info@bioworld.com)

Tel: 6123263284

Fax: 6122933841

### Bioworld technology, co. Ltd.

Add: No 9, weidi road Qixia District Nanjing, 210046, P. R. China.

Email: [info@biogot.com](mailto:info@biogot.com)

Tel: 0086-025-68037686

Fax: 0086-025-68035151