

## MDH1 polyclonal antibody

Catalog: BS60457

Host: Rabbit

Reactivity: Human, Mouse, Rat

### BackGround:

Cytosolic malate dehydrogenase (MDHC or cMDH) is an important NAD-dependent enzyme involved in glycometabolism that catalyzes the formation of oxaloacetate and NADH from L-malate and NAD. MDHC is highly expressed in brain, heart and skeletal muscle and plays a role in aerobic energy production for muscle contraction, transmission of neuronal signals, absorption/ resorption pathways, collagen-supporting functions, dead cell phagocytosis, as well as pathways involved in gas exchange and cell division. Furthermore, MDHC is a regulatory subunit of the nucleic acid-conducting channel (NACH). MDHC functions as a homodimer and is highly conserved in plants, animals and bacteria. The activity of MDHC is controlled by the sesquiterpenoid juvenile hormone (JH) and the steroid hormone ecdysone.

### Product:

1mg/ml in PBS with 0.1% Sodium Azide, 50% Glycerol.

### Molecular Weight:

~ 36 kDa

### Swiss-Prot:

P40925

### Purification&Purity:

The antibody was affinity-purified from rabbit antiserum by affinity-chromatography using epitope-specific immunogen and the purity is > 95% (by SDS-PAGE).

### Applications:

WB: 1:500~1:1000

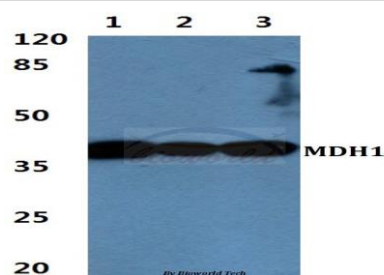
### Storage&Stability:

Store at 4 °C short term. Aliquot and store at -20 °C long term. Avoid freeze-thaw cycles.

### Specificity:

MDH1 polyclonal antibody detects endogenous levels of MDH1 protein.

### DATA:



Western blot (WB) analysis of MDH1 polyclonal antibody at 1:500 dilution

Lane1:Hela cell lysate

Lane2:HepG2 cell lysate

Lane3:PC12 cell lysate

### Note:

For research use only, not for use in diagnostic procedure.

### Bioworld Technology, Inc.

Add: 1660 South Highway 100, Suite 500 St. Louis Park, MN 55416, USA.

Email: [info@bioworld.com](mailto:info@bioworld.com)

Tel: 6123263284

Fax: 6122933841

### Bioworld technology, co. Ltd.

Add: No 9, weidi road Qixia District Nanjing, 210046, P. R. China.

Email: [info@biogol.com](mailto:info@biogol.com)

Tel: 0086-025-68037686

Fax: 0086-025-68035151