

PKLR polyclonal antibody

Catalog: BS60443

Host: Rabbit

Reactivity: Human, Mouse, Rat

BackGround:

In mammals, four different isoenzymes exist for pyruvate kinase. Based on their tissue distribution, the isoenzymes are designated L-type (for predominant expression in the liver), R-type (for predominant expression in red blood cells), M1-type (for predominant expression in muscle, brain and heart) and M2-type (for predominant expression in fetal tissues). Pyruvate kinases are responsible for catalyzing the final step in glycolysis: the conversion of phosphoenolpyruvate to pyruvate with the coinciding generation of ATP. The PKLR (pyruvate kinase, liver and RBC) gene encodes the L- and R-type isoenzymes through alternative splicing events under the control of different promoters. The R-type isoform, also known as RPK (R-type pyruvate kinase), exists as a tetramer and, when functioning improperly, can result in chronic/hereditary nonspherocytic hemolytic anemia (CNSHA/HNSHA) or pyruvate kinase hyperactivity (also called high red cell ATP syndrome). The L-type isoform, alternatively known as PKL (pyruvate kinase L-type), also exists as a tetramer and is upregulated by glucose with implications in maturity-onset diabetes of the young (MODY).

Product:

1 mg/ml in Phosphate buffered saline (PBS) with 0.05% sodium azide, approx. pH 7.2.

Molecular Weight:

~ 62 kDa

Swiss-Prot:

P30613

Purification&Purity:

The antibody was affinity-purified from rabbit antiserum by affinity-chromatography using epitope-specific immunogen and the purity is > 95% (by SDS-PAGE).

Applications:

WB: 1:500~1:1000

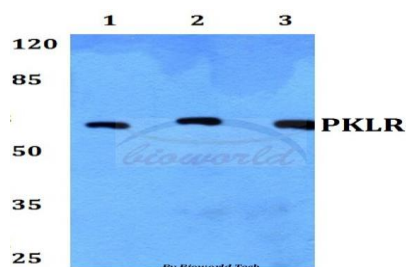
Storage&Stability:

Store at 4 °C short term. Aliquot and store at -20 °C long term. Avoid freeze-thaw cycles.

Specificity:

PKLR polyclonal antibody detects endogenous levels of PKLR protein.

DATA:



Western blot (WB) analysis of PKLR polyclonal antibody at 1:500 dilution

Lane1:Hela whole cell lysate

Lane2:Raw264.7 whole cell lysate

Lane3:PC12 whole cell lysate

Note:

For research use only, not for use in diagnostic procedure.

Bioworld Technology, Inc.

Add: 1660 South Highway 100, Suite 500 St. Louis Park, MN 55416, USA.

Email: info@bioworld.com

Tel: 6123263284

Fax: 6122933841

Bioworld technology, co. Ltd.

Add: No 9, weidi road Qixia District Nanjing, 210046, P. R. China.

Email: info@biogot.com

Tel: 0086-025-68037686

Fax: 0086-025-68035151