

## INCENP polyclonal antibody

Catalog: BS60432

Host: Rabbit

Reactivity: Human, Mouse, Rat

### BackGround:

A replicated chromosome includes two kinetochores that control chromosome segregation during mitosis. The centromere proteins CENP-A, CENP-B, CENP-C, CENP-E, CENP-F (also designated mitotin), CENP-H and INCENP are kinetochore proteins that are involved in mitotic events. The centromere proteins are expressed at different levels throughout the cell cycle and are involved in the formation of the centromere and the organization and function of the kinetochore. INCENP, which also is designated inner centromere protein, is a chromosomal passenger protein that is crucial for chromosome segregation. During mitosis it is also required for cytokinesis onset. This protein, which can form a homodimer or a heterodimer, binds directly to microtubules and interacts with AURKB, AURKC, CBX3 and  $\beta$  Tubulin. This nuclear protein localizes to the mitotic spindle, metaphase chromosomes and during anaphase, to the equatorial cortex.

### Product:

1 mg/ml in Phosphate buffered saline (PBS) with 0.05% sodium azide, approx. pH 7.2.

### Molecular Weight:

~ 140 kDa

### Swiss-Prot:

Q9NQS7

### Purification&Purity:

The antibody was affinity-purified from rabbit antiserum by affinity-chromatography using epitope-specific im-

munogen and the purity is > 95% (by SDS-PAGE).

### Applications:

WB: 1:500~1:1000

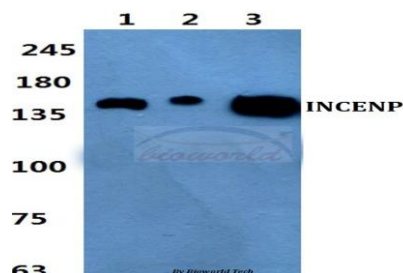
### Storage&Stability:

Store at 4 °C short term. Aliquot and store at -20 °C long term. Avoid freeze-thaw cycles.

### Specificity:

INCENP polyclonal antibody detects endogenous levels of INCENP protein.

### DATA:



Western blot (WB) analysis of INCENP polyclonal antibody at 1:500 dilution

Lane1: HEK293T cell lysate

Lane2: sp2/0 cell lysate

Lane3: PC12 cell lysate

### Note:

For research use only, not for use in diagnostic procedure.

### Bioworld Technology, Inc.

Add: 1660 South Highway 100, Suite 500 St. Louis Park, MN 55416, USA.

Email: [info@bioworld.com](mailto:info@bioworld.com)

Tel: 6123263284

Fax: 6122933841

### Bioworld technology, co. Ltd.

Add: No 9, weidi road Qixia District Nanjing, 210046, P. R. China.

Email: [info@biogol.com](mailto:info@biogol.com)

Tel: 0086-025-68037686

Fax: 0086-025-68035151