

## SCT polyclonal antibody

Catalog: BS60409

Host: Rabbit

Reactivity: Human, Mouse, Rat

### BackGround:

Secretin is a 27-amino acid hormone produced by specific endocrine cells, S cells, located in the mucosa of the proximal small intestine. Secretin is known to be a potent stimulus for the secretion of bicarbonate-rich pancreatic juice. Secretion of secretin is stimulated by the presence of either acidic pH or fatty acids in the duodenum. Secretin is synthesized as a larger precursor. The deduced amino acid sequence includes a signal peptide, an amino-terminal peptide, secretin itself, and a 72-amino acid carboxy-terminal peptide. Secretin stimulates ductal bile secretion by directly interacting with cholangiocytes. It stimulates exocytosis in cholangiocytes, which transport water mainly via the water channel aquaporin-1. Secretin deficiency may be implicated in autistic syndrome, suggesting that the hormone could have a neuroendocrine function in addition to its role in digestion. The gene which encodes secretin maps to human chromosome 11p15.5.

### Product:

1 mg/ml in Phosphate buffered saline (PBS) with 0.05% sodium azide, approx. pH 7.2.

### Molecular Weight:

~ 278 kDa

### Swiss-Prot:

P09683

### Purification&Purity:

The antibody was affinity-purified from rabbit antiserum by affinity-chromatography using epitope-specific im-

munogen and the purity is > 95% (by SDS-PAGE).

### Applications:

WB: 1:500~1:1000

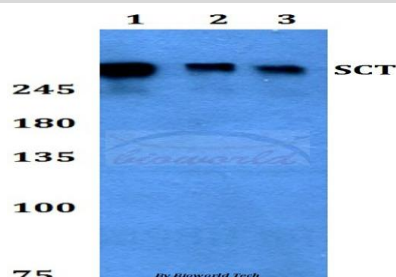
### Storage&Stability:

Store at 4 °C short term. Aliquot and store at -20 °C long term. Avoid freeze-thaw cycles.

### Specificity:

SCT polyclonal antibody detects endogenous levels of SCT protein.

### DATA:



Western blot (WB) analysis of SCT polyclonal antibody at 1:500 dilution

Lane1: HEK293T whole cell lysate

Lane2: Raw264.7 whole cell lysate

Lane3: H9C2 whole cell lysate

### Note:

For research use only, not for use in diagnostic procedure.

### Bioworld Technology, Inc.

Add: 1660 South Highway 100, Suite 500 St. Louis Park, MN 55416, USA.

Email: [info@bioworld.com](mailto:info@bioworld.com)

Tel: 6123263284

Fax: 6122933841

### Bioworld technology, co. Ltd.

Add: No 9, weidi road Qixia District Nanjing, 210046, P. R. China.

Email: [info@biogot.com](mailto:info@biogot.com)

Tel: 0086-025-68037686

Fax: 0086-025-68035151