

Podoplanin polyclonal antibody

Catalog: BS60406

Host: Rabbit

Reactivity: Human, Mouse, Rat

BackGround:

Puromycin aminonucleoside nephrosis (PAN) is a rat model for human minimal change nephropathy. During PAN, severe proteinuria is induced that is paralleled by a reduced expression of a rat podocyte protein, named podoplanin. Podoplanin, also known as glycoprotein 38 (gp38) is a type I membrane protein. Podoplanin localizes in stromal cells of peripheral lymphoid tissue and thymic epithelial cells. As a regulator of the lymphatic endothelium, podoplanin probably plays a role in maintaining the unique shape of podocytes.

Product:

1mg/ml in PBS with 0.1% Sodium Azide, 50% Glycerol.

Molecular Weight:

~ 37 kDa

Swiss-Prot:

Q7L375

Purification&Purity:

The antibody was affinity-purified from rabbit antiserum by affinity-chromatography using epitope-specific immunogen and the purity is > 95% (by SDS-PAGE).

Applications:

WB: 1:500~1:1000

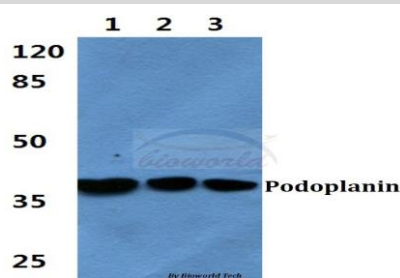
Storage&Stability:

Store at 4 °C short term. Aliquot and store at -20 °C long term. Avoid freeze-thaw cycles.

Specificity:

Podoplanin polyclonal antibody detects endogenous levels of Podoplanin protein.

DATA:



Western blot (WB) analysis of Podoplanin polyclonal antibody at 1:500 dilution

Lane1: HEK293T cell lysate

Lane2: Raw264.7 cell lysate

Lane3: PC12 cell lysate

Note:

For research use only, not for use in diagnostic procedure.

Bioworld Technology, Inc.

Add: 1660 South Highway 100, Suite 500 St. Louis Park, MN 55416, USA.

Email: info@bioworld.com

Tel: 6123263284

Fax: 6122933841

Bioworld technology, co. Ltd.

Add: No 9, weidi road Qixia District Nanjing, 210046, P. R. China.

Email: info@biogol.com

Tel: 0086-025-68037686

Fax: 0086-025-68035151