

Calcitonin polyclonal antibody

Catalog: BS60375

Host: Rabbit

Reactivity: Human, Mouse, Rat

BackGround:

Calcitonin is a 32 amino acid polypeptide hormone that preserves skeletal integrity and reduces blood calcium levels by decreasing osteoclast activity in bones, calcium and phosphate reabsorption by kidney tubules and calcium absorption by the intestines. The secretion of Calcitonin from the thyroid is regulated in part by estrogen, which increases Calcitonin mRNA levels. The Calcitonin gene, CALCA, undergoes tissue-specific RNA alternative splicing, resulting in the production of different mRNA transcripts. One transcript encodes procalcitonin as well as both calcium-lowering processed active polypeptides, Calcitonin and katalcalcin. An alternative transcript of CALCA encodes the precursor for the neuropeptide referred to as Calcitonin gene-related peptide 1, also designated CGRP1 or α -CGRP. CGRP is a widely distributed vasodilatory peptide. Calcitonin and katalcalcin are produced primarily in the thyroid, while CGRP is produced in neuronal cells. A second CGRP related gene, CALCB, thought to be derived from a gene duplication event, has been identified in mouse, rat and human. Unlike CALCA, CALCB is not subject to alternative splicing and encodes a single transcript designated CGRP2 or β -CGRP. Mature CGRP1 and CGRP2 share significant sequence identity at the protein level differing by only 1-3 amino acid residues, depending on the species.

Product:

1 mg/ml in Phosphate buffered saline (PBS) with 0.05% sodium azide, approx. pH 7.2.

Molecular Weight:

~ 19 kDa

Swiss-Prot:

P01258

Purification&Purity:

The antibody was affinity-purified from rabbit antiserum by affinity-chromatography using epitope-specific immunogen and the purity is > 95% (by SDS-PAGE).

Applications:

WB: 1:500~1:1000

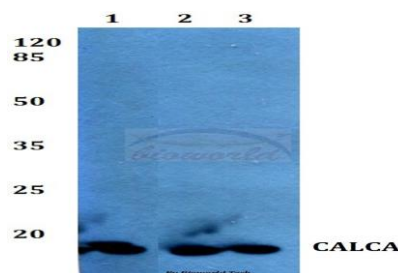
Storage&Stability:

Store at 4 °C short term. Aliquot and store at -20 °C long term. Avoid freeze-thaw cycles.

Specificity:

Calcitonin polyclonal antibody detects endogenous levels of Calcitonin protein.

DATA:



Western blot (WB) analysis of Calcitonin polyclonal antibody at 1:500 dilution

Lane1:HEK293T whole cell lysate

Lane2:Mouse heart tissue lysate

Lane3:Rat heart tissue lysate

Note:

For research use only, not for use in diagnostic procedure.

Bioworld Technology, Inc.

Add: 1660 South Highway 100, Suite 500 St. Louis Park, MN 55416, USA.

Email: info@bioworld.com

Tel: 6123263284

Fax: 6122933841

Bioworld technology, co. Ltd.

Add: No 9, weidi road Qixia District Nanjing, 210046, P. R. China.

Email: info@biogot.com

Tel: 0086-025-68037686

Fax: 0086-025-68035151