

## CD14 polyclonal antibody

Catalog: BS60355

Host: Rabbit

Reactivity: Human, Mouse, Rat

### BackGround:

Lipopolysaccharide (LPS) elicits the secretion of mediators and cytokines produced by activated macrophages and monocytes. CD14 is a glycosylphosphatidylinositol (GPI)-anchored protein found on the surfaces of monocytes and polymorphonuclear leukocytes. CD14 functions as a receptor for LPS, resulting in the secretion of various proteins. An important component in the LPS activation of monocytes through the CD14 receptor is the “adapter molecule,” lipopolysaccharide binding protein (LBP). There are two forms of CD14, a membrane-associated form (mCD14), and a soluble form (sCD14). mCD14 responds to LPS alone and facilitates the secretion of proteins, while cells not expressing mCD14 fail to respond to LPS. The cells that lack mCD14 respond to LPS/LBP in the presence of sCD14.

### Product:

1 mg/ml in Phosphate buffered saline (PBS) with 0.05% sodium azide, approx. pH 7.2.

### Molecular Weight:

~ 70 kDa

### Swiss-Prot:

P08571

### Purification&Purity:

The antibody was affinity-purified from rabbit antiserum by affinity-chromatography using epitope-specific immunogen and the purity is > 95% (by SDS-PAGE).

### Applications:

WB: 1:500~1:1000

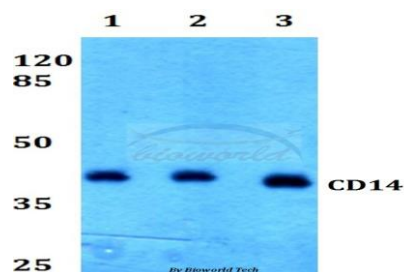
### Storage&Stability:

Store at 4 °C short term. Aliquot and store at -20 °C long term. Avoid freeze-thaw cycles.

### Specificity:

CD14 polyclonal antibody detects endogenous levels of CD14 protein.

### DATA:



Western blot (WB) analysis of CD14 polyclonal antibody at 1:500 dilution

Lane1: HEK293T whole cell lysate

Lane2: Raw264.7 whole cell lysate

Lane3: H9C2 whole cell lysate

### Note:

For research use only, not for use in diagnostic procedure.

### Bioworld Technology, Inc.

Add: 1660 South Highway 100, Suite 500 St. Louis Park, MN 55416, USA.

Email: [info@bioworld.com](mailto:info@bioworld.com)

Tel: 6123263284

Fax: 6122933841

### Bioworld technology, co. Ltd.

Add: No 9, weidi road Qixia District Nanjing, 210046, P. R. China.

Email: [info@biogot.com](mailto:info@biogot.com)

Tel: 0086-025-68037686

Fax: 0086-025-68035151