

Lymphotactin polyclonal antibody

Catalog: BS60304

Host: Rabbit

Reactivity: Human, Mouse, Rat

BackGround:

Lymphotactin is a chemokine-like molecule produced selectively, if not exclusively, by activated CD8+ T cells. Lymphotactin is a C-type member of the chemokine superfamily, but retains only the 2nd and 4th of the four cysteine residues conserved in other chemokines. In normal tissues, lymphotactin is expressed at high levels in spleen, thymus, small intestine, and peripheral blood leukocytes, as well as at low levels in lung, prostate, and ovary. Lymphotactin is chemotactic for CD4+ and CD8+ T cells but not for monocytes, and induces a rise in intracellular calcium in peripheral blood lymphocytes. The specific receptor for lymphotactin is XCR1, a member of the G protein-coupled receptor family.

Product:

1 mg/ml in Phosphate buffered saline (PBS) with 0.05% sodium azide, approx. pH 7.2.

Molecular Weight:

~ 13 kDa

Swiss-Prot:

P47992

Purification&Purity:

The antibody was affinity-purified from rabbit antiserum by affinity-chromatography using epitope-specific immunogen and the purity is > 95% (by SDS-PAGE).

Applications:

WB: 1:500~1:1000

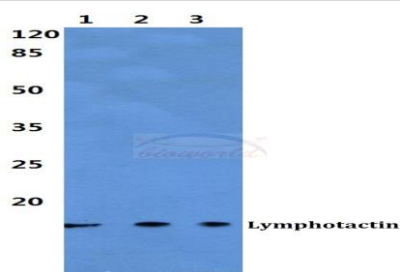
Storage&Stability:

Store at 4 °C short term. Aliquot and store at -20 °C long term. Avoid freeze-thaw cycles.

Specificity:

Lymphotactin polyclonal antibody detects endogenous levels of Lymphotactin protein.

DATA:



Western blot (WB) analysis of Lymphotactin polyclonal antibody at 1:500 dilution

Lane1: Jurkat cell lysate

Lane2: Mouse liver tissue lysate

Lane3: Rat liver tissue lysate

Note:

For research use only, not for use in diagnostic procedure.

Bioworld Technology, Inc.

Add: 1660 South Highway 100, Suite 500 St. Louis Park, MN 55416, USA.

Email: info@bioworld.com

Tel: 6123263284

Fax: 6122933841

Bioworld technology, co. Ltd.

Add: No 9, weidi road Qixia District Nanjing, 210046, P. R. China.

Email: info@biogot.com

Tel: 0086-025-68037686

Fax: 0086-025-68035151