

**IL17A polyclonal antibody**

Catalog: BS60297

Host: Rabbit

Reactivity: Human, Mouse, Rat

**BackGround:**

Interleukin-17 (IL-17) and its cognate receptor, IL-17R, are an example of such a cytokine receptor pair. Originally identified as a rodent cDNA termed CTLA8, IL-17 is capable of inducing the secretion of IL-6 and IL-8 and augmenting the expression of ICAM-1 in human fibroblast cultures. The IL-17 protein exhibits a striking degree of homology with the HSV13 protein which mimics its function. The IL-17 receptor is a type I transmembrane protein 864 amino acids in length, that is highly expressed in spleen and kidney.

**Product:**

1mg/ml in PBS with 0.1% Sodium Azide, 50% Glycerol.

**Molecular Weight:**

~ 17, 30 kDa

**Swiss-Prot:**

Q16552

**Purification&Purity:**

The antibody was affinity-purified from rabbit antiserum by affinity-chromatography using epitope-specific immunogen and the purity is > 95% (by SDS-PAGE).

**Applications:**

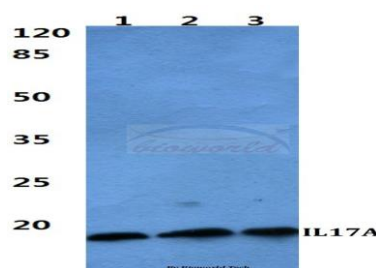
WB: 1:500~1:1000

**Storage&Stability:**

Store at 4 °C short term. Aliquot and store at -20 °C long term. Avoid freeze-thaw cycles.

**Specificity:**

IL17A polyclonal antibody detects endogenous levels of IL17A protein.

**DATA:**

Western blot (WB) analysis of IL17A polyclonal antibody at 1:500 dilution

Lane1:THP-1 cell lysate

Lane2:Raw264.7 cell lysate

Lane3:H9C2 cell lysate

**Note:**

For research use only, not for use in diagnostic procedure.

**Bioworld Technology, Inc.**

Add: 1660 South Highway 100, Suite 500 St. Louis Park, MN 55416, USA.

Email: [info@bioworld.com](mailto:info@bioworld.com)

Tel: 6123263284

Fax: 6122933841

**Bioworld technology, co. Ltd.**

Add: No 9, weidi road Qixia District Nanjing, 210046, P. R. China.

Email: [info@biogot.com](mailto:info@biogot.com)

Tel: 0086-025-68037686

Fax: 0086-025-68035151