

SHOX polyclonal antibody

Catalog: BS60246

Host: Rabbit

Reactivity: Human, Mouse, Rat

BackGround:

Homeodomain proteins (HP) are transcriptional regulators that coordinate the expression of genes involved in development, differentiation and cellular transformation. HPs are characterized by a conserved domain of 60 amino acid residues that recognize and bind a site in the regulatory region of the target gene. SHOX, a member of the bicoid subfamily of the paired homeobox family, controls fundamental aspects of growth and development and undergoes splicing resulting in two isoforms, SHOXA and SHOXB. SHOXA is expressed in skeletal muscle, placental, pancreas, heart and bone marrow fibroblast and, to a lesser extent, in kidney and lung. SHOXB is highly expressed in osteogenic cells, but not expressed in brain, kidney, liver or lung. Defects in the gene SHOXX cause Leri-Weill dyschondrosteosis (LWD) and Langer mesomelic dysplasia (LMD).

Product:

1mg/ml in PBS with 0.1% Sodium Azide, 50% Glycerol.

Molecular Weight:

~ 29 kDa

Swiss-Prot:

O15266

Purification&Purity:

The antibody was affinity-purified from rabbit antiserum by affinity-chromatography using epitope-specific immunogen and the purity is > 95% (by SDS-PAGE).

Applications:

WB: 1:500~1:1000

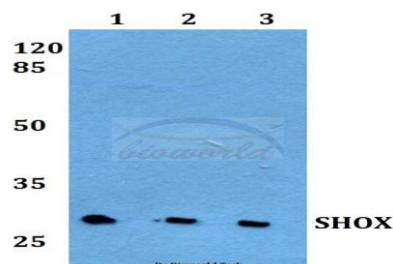
Storage&Stability:

Store at 4 °C short term. Aliquot and store at -20 °C long term. Avoid freeze-thaw cycles.

Specificity:

SHOX polyclonal antibody detects endogenous levels of SHOX protein.

DATA:



Western blot (WB) analysis of SHOX polyclonal antibody at 1:500 dilution

Lane1: HEK293T whole cell lysate

Lane2: Raw264.7 whole cell lysate

Lane3: sp2/0 whole cell lysate

Note:

For research use only, not for use in diagnostic procedure.

Bioworld Technology, Inc.

Add: 1660 South Highway 100, Suite 500 St. Louis Park, MN 55416, USA.

Email: info@bioworld.com

Tel: 6123263284

Fax: 6122933841

Bioworld technology, co. Ltd.

Add: No 9, weidi road Qixia District Nanjing, 210046, P. R. China.

Email: info@biogot.com

Tel: 0086-025-68037686

Fax: 0086-025-68035151