

RGL1 polyclonal antibody

Catalog: BS60212

Host: Rabbit

Reactivity: Human, Mouse, Rat

BackGround:

Ral GDS (Ral guanine nucleotide dissociation stimulator) is a guanine nucleotide exchange factor (GEF) that activates Ral and is implicated in oncogenic Ras-induced cell transformation. RGL1 (ral guanine nucleotide dissociation stimulator-like 1), also known as RGL or RalGDS-like 1, is a 768 amino acid protein that is a putative GEF. Strongly expressed in brain, heart, spleen, kidney and testis, RGL1 is a downstream effector protein that is involved in Ras and Ral signaling pathways. RGL1 contains an N-terminal Ras-GEF domain and a C-terminal Ras-interacting domain that interacts with the GTP-bound form of Ras through its effector loop. Due to its similarity to Ral GDS, RGL1 may be implicated in carcinogenesis. Two isoforms exist due to alternative splicing events.

Product:

1 mg/ml in Phosphate buffered saline (PBS) with 0.05% sodium azide, approx. pH 7.2.

Molecular Weight:

~ 87 kDa

Swiss-Prot:

Q9NZL6

Purification&Purity:

The antibody was affinity-purified from rabbit antiserum by affinity-chromatography using epitope-specific immunogen and the purity is > 95% (by SDS-PAGE).

Applications:

WB: 1:500~1:1000

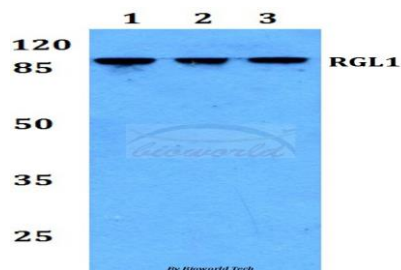
Storage&Stability:

Store at 4 °C short term. Aliquot and store at -20 °C long term. Avoid freeze-thaw cycles.

Specificity:

RGL1 polyclonal antibody detects endogenous levels of RGL1 protein.

DATA:



Western blot (WB) analysis of RGL1 polyclonal antibody at 1:500 dilution

Lane1:HEK293T whole cell lysate

Lane2:NIH-3T3 whole cell lysate

Lane3:PC12 whole cell lysate

Note:

For research use only, not for use in diagnostic procedure.

Bioworld Technology, Inc.

Add: 1660 South Highway 100, Suite 500 St. Louis Park, MN 55416, USA.

Email: info@bioworld.com

Tel: 6123263284

Fax: 6122933841

Bioworld technology, co. Ltd.

Add: No 9, weidi road Qixia District Nanjing, 210046, P. R. China.

Email: info@biogot.com

Tel: 0086-025-68037686

Fax: 0086-025-68035151