

MYBPC2 polyclonal antibody

Catalog: BS60182

Host: Rabbit

Reactivity: Human, Mouse, Rat

BackGround:

MYBPC2, also known as MYBPCF or MYBPC, is a 1,142 amino acid protein that contains 3 fibronectin type-III domains and 7 Ig-like C 2-type domains. Existing as a member of the immunoglobulin superfamily, MYBPC2 functions as a thick filament-associated protein that localizes to striated muscle bands in vertebrae and is thought to modify the activity of select ATPases. Additionally, MYBPC2 may play a role in the modulation of muscle contraction and in the overall structural integrity of the cell. The gene encoding MYBPC2 maps to human chromosome 19, which is the genetic home for a number of immunoglobulin superfamily members, including the killer cell and leukocyte Ig-like receptors, a number of ICAMs, the CEACAM and PSG family and Fc receptors (FcRs).

Product:

1mg/ml in PBS with 0.1% Sodium Azide, 50% Glycerol.

Molecular Weight:

~ 128 kDa

Swiss-Prot:

Q14324

Purification&Purity:

The antibody was affinity-purified from rabbit antiserum by affinity-chromatography using epitope-specific immunogen and the purity is > 95% (by SDS-PAGE).

Applications:

WB: 1:500~1:1000

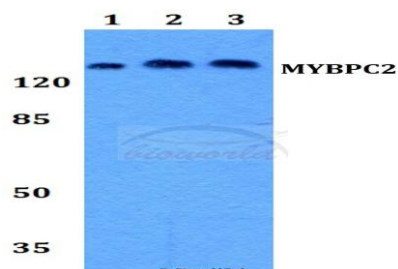
Storage&Stability:

Store at 4 °C short term. Aliquot and store at -20 °C long term. Avoid freeze-thaw cycles.

Specificity:

MYBPC2 polyclonal antibody detects endogenous levels of MYBPC2 protein.

DATA:



Western blot (WB) analysis of MYBPC2 polyclonal antibody at 1:500 dilution

Lane1:Hela whole cell lysate

Lane2:NIH-3T3 whole cell lysate

Lane3:H9C2 whole cell lysate

Note:

For research use only, not for use in diagnostic procedure.

Bioworld Technology, Inc.

Add: 1660 South Highway 100, Suite 500 St. Louis Park, MN 55416, USA.

Email: info@bioworld.com

Tel: 6123263284

Fax: 6122933841

Bioworld technology, co. Ltd.

Add: No 9, weidi road Qixia District Nanjing, 210046, P. R. China.

Email: info@biogol.com

Tel: 0086-025-68037686

Fax: 0086-025-68035151