

## Mucin 4 polyclonal antibody

Catalog: BS60177

Host: Rabbit

Reactivity: Human, Mouse, Rat

### BackGround:

Mucins are a group of high molecular weight glycoproteins consisting of a mucin core protein and O-linked carbohydrates. Mucin 4, a membrane-bound mucin, is the human homolog of the rat sialomucin complex (SMC). Mucin 4 protein consists of Mucin 4 $\alpha$ , a large amino mucin type subunit, and Mucin 4 $\beta$ , a transmembrane subunit containing three EGF-like domains. The Mucin 4 gene is the predominant mucin gene expressed in the normal urothelium and is also expressed in several normal tissues such as trachea, lung and testis. Dysregulation of Mucin 4 results in high levels of expression in pancreatic tumors and tumor cell lines. Induction of Mucin 4 in pancreatic carcinoma by all-trans-retinoic acid is mediated through the retinoic acid receptor- $\alpha$  signaling pathway. TGF $\beta$ 2 serves as an interim mediator of this regulated expression. Alternative splicing in the 3'-end of the Mucin 4 gene generates at least 12 splice variants, which are characterized as two distinct types, a secreted type and a membrane-associated type. Mucin 4 protein acts as a heterodimeric bifunctional cell-surface glycoprotein and forms thick mucous effusion in the diseased middle ear.

### Product:

1mg/ml in PBS with 0.1% Sodium Azide, 50% Glycerol.

### Molecular Weight:

~ 260 kDa

### Swiss-Prot:

Q99102

### Purification&Purity:

The antibody was affinity-purified from rabbit antiserum by affinity-chromatography using epitope-specific immunogen and the purity is > 95% (by SDS-PAGE).

### Applications:

WB: 1:500~1:1000

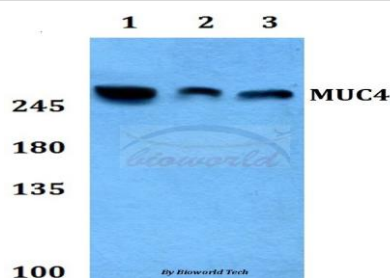
### Storage&Stability:

Store at 4 °C short term. Aliquot and store at -20 °C long term. Avoid freeze-thaw cycles.

### Specificity:

Mucin 4 polyclonal antibody detects endogenous levels of Mucin 4 protein.

### DATA:



Western blot (WB) analysis of Mucin 4 polyclonal antibody at 1:500 dilution

Lane1:Hela whole cell lysate

Lane2:sp2/0 whole cell lysate

Lane3:PC12 whole cell lysate

### Note:

For research use only, not for use in diagnostic procedure.

### Bioworld Technology, Inc.

Add: 1660 South Highway 100, Suite 500 St. Louis Park, MN 55416, USA.

Email: [info@bioworld.com](mailto:info@bioworld.com)

Tel: 6123263284

Fax: 6122933841

### Bioworld technology, co. Ltd.

Add: No 9, weidi road Qixia District Nanjing, 210046, P. R. China.

Email: [info@biogot.com](mailto:info@biogot.com)

Tel: 0086-025-68037686

Fax: 0086-025-68035151