

## SIX3 polyclonal antibody

Catalog: BS60165

Host: Rabbit

Reactivity: Human, Mouse, Rat

### BackGround:

The Six proteins (sine oculis) are a family of homeodomain transcription factors that share a conserved DNA binding domain. Six3 is required for the specification and proliferation of the eye field in vertebrates and may be involved in some developmental disorders of the brain. Expression of Six3 is detected in human embryos as early as five to seven weeks of gestation, and is maintained in the eye throughout the entire period of fetal development. At 20 weeks of gestation, expression of Six3 in the human retina has been observed in ganglion cells and in cells of the inner nuclear layer.

### Product:

1mg/ml in PBS with 0.1% Sodium Azide, 50% Glycerol.

### Molecular Weight:

~ 35 kDa

### Swiss-Prot:

O95343

### Purification&Purity:

The antibody was affinity-purified from rabbit antiserum by affinity-chromatography using epitope-specific immunogen and the purity is > 95% (by SDS-PAGE).

### Applications:

WB: 1:500~1:1000

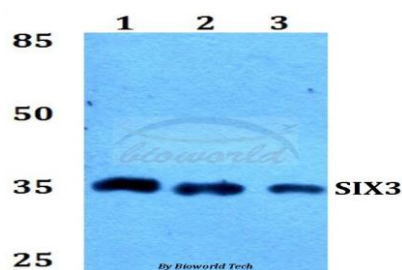
### Storage&Stability:

Store at 4 °C short term. Aliquot and store at -20 °C long term. Avoid freeze-thaw cycles.

### Specificity:

SIX3 polyclonal antibody detects endogenous levels of SIX3 protein.

### DATA:



Western blot (WB) analysis of SIX3 polyclonal antibody at 1:500 dilution

Lane1:Hela whole cell lysate

Lane2:Raw264.7 whole cell lysate

Lane3:PC12 whole cell lysate

### Note:

For research use only, not for use in diagnostic procedure.

### Bioworld Technology, Inc.

Add: 1660 South Highway 100, Suite 500 St. Louis Park, MN 55416, USA.

Email: [info@bioworld.com](mailto:info@bioworld.com)

Tel: 6123263284

Fax: 6122933841

### Bioworld technology, co. Ltd.

Add: No 9, weidi road Qixia District Nanjing, 210046, P. R. China.

Email: [info@biogot.com](mailto:info@biogot.com)

Tel: 0086-025-68037686

Fax: 0086-025-68035151