

BMPR2 polyclonal antibody

Catalog: BS60120

Host: Rabbit

Reactivity: Human, Mouse

BackGround:

Members of the transforming growth factor β superfamily bind to a pair of transmembrane proteins, known as receptor types I and II, which contain serine/threonine kinases and associate to form a signaling complex. Two type I receptors have been characterized, BMPR-IA (also designated SKR5, ALK-3, and BRK-1) and BMPR-IB (also designated ALK-6 and SKR 6), that bind to bone morphogenetic proteins (BMP)-2, BMP-4, and osteogenic protein (OP)-1 (also designated BMP-7). BMPR-IA and BMPR-IB are both expressed in human glioma cell lines. The type II receptor, BMPR-II, efficiently binds to OP-1 and BMP-2 and weakly binds BMP-4, and it is widely expressed in different tissues, including brain. The BMP receptor family members are thought to mediate distinct effects on gene expression, cell differentiation, and morphogenesis in a dose dependent fashion.

Product:

1mg/ml in PBS with 0.1% Sodium Azide, 50% Glycerol.

Molecular Weight:

~ 115 kDa

Swiss-Prot:

Q13873

Purification&Purity:

The antibody was affinity-purified from rabbit antiserum by affinity-chromatography using epitope-specific immunogen and the purity is > 95% (by SDS-PAGE).

Applications:

WB: 1:500~1:1000

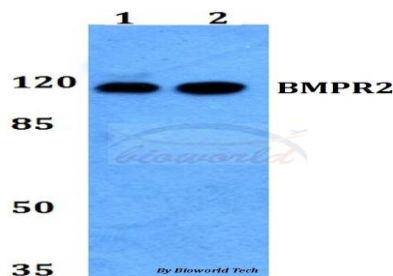
Storage&Stability:

Store at 4 °C short term. Aliquot and store at -20 °C long term. Avoid freeze-thaw cycles.

Specificity:

BMPR2 polyclonal antibody detects endogenous levels of BMPR2 protein.

DATA:



Western blot (WB) analysis of BMPR2 polyclonal antibody at 1:500 dilution

Lane1: HEK293T whole cell lysate

Lane2: Raw264.7 whole cell lysate

Note:

For research use only, not for use in diagnostic procedure.

Bioworld Technology, Inc.

Add: 1660 South Highway 100, Suite 500 St. Louis Park, MN 55416, USA.

Email: info@bioworld.com

Tel: 6123263284

Fax: 6122933841

Bioworld technology, co. Ltd.

Add: No 9, weidi road Qixia District Nanjing, 210046, P. R. China.

Email: info@biogot.com

Tel: 0086-025-68037686

Fax: 0086-025-68035151