

SNRPD3 polyclonal antibody

Catalog: BS60048

Host: Rabbit

Reactivity: Human, Mouse, Rat

BackGround:

U1, U2, U4, U5, U6 and U7 are small nuclear ribonucleoproteins (snRNPs) that comprise the spliceosome in eukaryotes. Each UsnRNP contains common Sm proteins B/B', D1, D2, D3, E, F and G. The Sm proteins pair up as D1-D2, B/B'-D3 and E-F-G to form RNA-free hetero-oligomers in the cytoplasm. Sm proteins aid in the cytoplasmic construction of the UsnRNPs by binding to a conserved Sm site on UsnRNA and forming a stable snRNP core complex. Sm D1, D2 and D3 are present in U1, U2, U4/5 and U5 but not U7 snRNPs in human and mouse cells. U7 snRNPs contain Lsm10, an Sm D1-like protein. Autoantibodies produced in patients suffering from systemic lupus erythematosus react predominantly with Sm B/B', D1 and D3. The major linear epitope of these autoantibodies includes the C-terminal RG dipeptide repeats found in Sm D1 and D3.

Product:

1 mg/ml in Phosphate buffered saline (PBS) with 0.05% sodium azide, approx. pH 7.2.

Molecular Weight:

~ 14 kDa

Swiss-Prot:

P62318

Purification&Purity:

The antibody was affinity-purified from rabbit antiserum by affinity-chromatography using epitope-specific immunogen and the purity is > 95% (by SDS-PAGE).

Applications:

WB: 1:500~1:1000

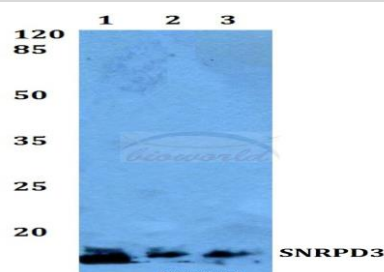
Storage&Stability:

Store at 4 °C short term. Aliquot and store at -20 °C long term. Avoid freeze-thaw cycles.

Specificity:

SNRPD3 polyclonal antibody detects endogenous levels of SNRPD3 protein.

DATA:



Western blot (WB) analysis of SNRPD3 polyclonal antibody at 1:500 dilution

Lane1: Jurkat whole cell lysate

Lane2: Mouse brain tissue lysate

Lane3: H9C2 whole cell lysate

Note:

For research use only, not for use in diagnostic procedure.

Bioworld Technology, Inc.

Add: 1660 South Highway 100, Suite 500 St. Louis Park, MN 55416, USA.

Email: info@bioworld.com

Tel: 6123263284

Fax: 6122933841

Bioworld technology, co. Ltd.

Add: No 9, weidi road Qixia District Nanjing, 210046, P. R. China.

Email: info@biogot.com

Tel: 0086-025-68037686

Fax: 0086-025-68035151