

CD52 polyclonal antibody

Catalog: BS60045

Host: Rabbit

Reactivity: Human, Mouse, Rat

BackGround:

CD52 is a glycosylphosphatidylinositol (GPI)-linked surface antigen present at high levels on epithelial cells lining the male reproductive tract, thymocytes, lymphocytes, monocytes and macrophages. It is also present at variable levels on lymphoid malignancies. During sperm maturation, spermatozoa passing through the genital tract acquire CD52 that is shed from the epithelial cell lining into seminal plasma. CD52 is detectable on the surface of epididymal sperm and in the ejaculate but not on spermato-genetic cells or testicular spermatozoa. The peptide backbone of CD52, which consists of 12 amino acids, is considered a mere scaffold for posttranslational modifications, such as GPI-anchor and N-glycosylation.

Product:

1 mg/ml in Phosphate buffered saline (PBS) with 0.05% sodium azide, approx. pH 7.2.

Molecular Weight:

~ 15 kDa

Swiss-Prot:

P31358

Purification&Purity:

The antibody was affinity-purified from rabbit antiserum by affinity-chromatography using epitope-specific immunogen and the purity is > 95% (by SDS-PAGE).

Applications:

WB: 1:500~1:1000

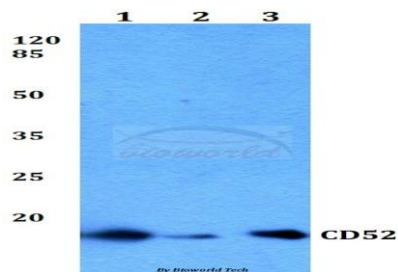
Storage&Stability:

Store at 4 °C short term. Aliquot and store at -20 °C long term. Avoid freeze-thaw cycles.

Specificity:

CD52 polyclonal antibody detects endogenous levels of CD52 protein.

DATA:



Western blot (WB) analysis of CD52 polyclonal antibody at 1:500 dilution

Lane1:THP-1 whole cell lysate

Lane2:Mouse spleen tissue lysate

Lane3:H9C2 whole cell lysate

Note:

For research use only, not for use in diagnostic procedure.

Bioworld Technology, Inc.

Add: 1660 South Highway 100, Suite 500 St. Louis Park, MN 55416, USA.

Email: info@bioworld.com

Tel: 6123263284

Fax: 6122933841

Bioworld technology, co. Ltd.

Add: No 9, weidi road Qixia District Nanjing, 210046, P. R. China.

Email: info@biogot.com

Tel: 0086-025-68037686

Fax: 0086-025-68035151