

## UBE4A polyclonal antibody

Catalog: BS5971

Host: Rabbit

Reactivity: Human, Mouse, Rat

### BackGround:

UBE4A (ubiquitin conjugation factor E4 A), also known as E4, UFD2 or UBOX2, is a 1,066 amino acid protein that functions in the multiubiquitin pathway of protein degradation. Expressed in cortical neurons and in tubular kidney cells, UBE4A is the human homolog of the *Saccharomyces cerevisiae* UFD2 protein and functions with the UBE (ubiquitin enzymes) proteins to catalyze ubiquitin chain assembly. UBE4A may be involved in cell growth and differentiation and can act as an autoantigen in scleroderma, a disease characterized by excessive deposits of collagen in the skin or other organs. Two isoforms of UBE4A exist due to alternative splicing events.

### Product:

1 mg/ml in Phosphate buffered saline (PBS) with 0.05% sodium azide, approx. pH 7.2.

### Molecular Weight:

~ 125 kDa

### Swiss-Prot:

Q14139

### Purification&Purity:

The antibody was affinity-purified from rabbit antiserum by affinity-chromatography using epitope-specific immunogen and the purity is > 95% (by SDS-PAGE).

### Applications:

WB: 1:500~1:1000

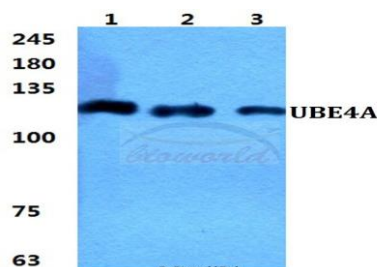
### Storage&Stability:

Store at 4 °C short term. Aliquot and store at -20 °C long term. Avoid freeze-thaw cycles.

### Specificity:

UBE4A polyclonal antibody detects endogenous levels of UBE4A protein.

### DATA:



Western blot (WB) analysis of UBE4A polyclonal antibody at 1:500 dilution

Lane1:Hela cell lysate

Lane2:sp2/0 cell lysate

Lane3:H9C2 cell lysate

### Note:

For research use only, not for use in diagnostic procedure.

### Bioworld Technology, Inc.

Add: 1660 South Highway 100, Suite 500 St. Louis Park, MN 55416, USA.

Email: [info@bioworld.com](mailto:info@bioworld.com)

Tel: 6123263284

Fax: 6122933841

### Bioworld technology, co. Ltd.

Add: No 9, weidi road Qixia District Nanjing, 210046, P. R. China.

Email: [info@biogol.com](mailto:info@biogol.com)

Tel: 0086-025-68037686

Fax: 0086-025-68035151